

Specifications

Operating temperature	-18°C to 50°C	
Dead Space	<7.0 ml	
Expiratory Resistance	0.12 cmH ₂ O at 5 lpm	
Inspiration Resistance	0.25 cmH ₂ O at 5 lpm	
Maximum Delivered Volume	100 ml	
Oxygen Concentration (FiO ₂)	O ₂ flow LPM	FiO ₂
	2	30 %
	3	50 %
	4	60 %
	6	75 %
	10	100 %

Specifications are subject to change please refer to product insert before use.

Research and development generously funded by:

CE 0123



BILL & MELINDA GATES foundation



WHIPSAW



Cat.no : 7.2.3-40 / 03 / June 2020

Phoenix Medical Systems Private Limited

DP42, SIDCO Industrial Estate, Thirumudivakkam, Tamil Nadu – 600132, India
 Toll Free India : 1800 425 3503, Phone: +91 44 2478 1705 / 2227,
 India : sales@pmsind.com, International: exports@pmsind.com
 www.phoenixmedicalsystems.com

NeoBreatheTM

Advanced newborn resuscitation system with integrated suction



Confidence and control for the expert

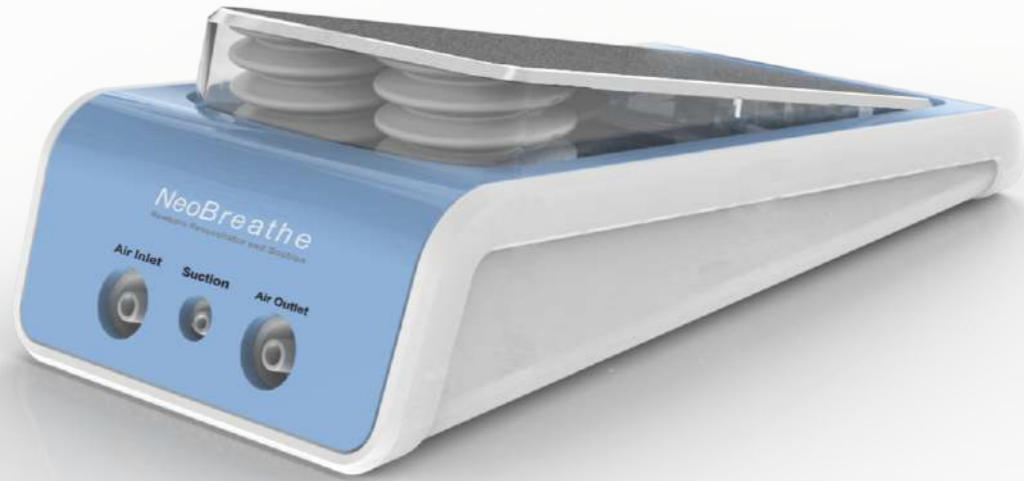
Designed and developed in India by



Windmill Health
 Because *saving lives should be simple*

Manufactured and marketed by

PHOENIX
 Phoenix Medical Systems (P) Ltd.



Features

SINGLE HANDED USE: FREES ONE HAND

The free hand allows a single operator to multi task efficiently or hold mask with both hands, for better sealing and more reliable volume delivery.

A single person can now also deliver chest compressions.

STABLE GRIP

No movement of mask from bag compression ensures a stable grip, leading to effective sealing and more reliable volumes.

REGULATED OXYGEN DELIVERY: WITHOUT BLENDER/ COMPRESSOR

Allows resuscitation with room air.

Allows regulation of FiO₂ by regulating oxygen flow-rate

No need for expensive blender and compressed air equipment.

REAL-TIME PRESSURE FEEDBACK

Built-in reusable manometer enhances safety and confidence.

ENHANCED PRESSURE SAFETY

NeoBreathe's proprietary SmoothFlow technology ensures pressure **never** exceeds 40 cm H₂O: even on vigorous pedal compression.

DELIVERS PEEP*

Give gold-standard care to premature newborns through PEEP valve accessory.

INTEGRATED SUCTION

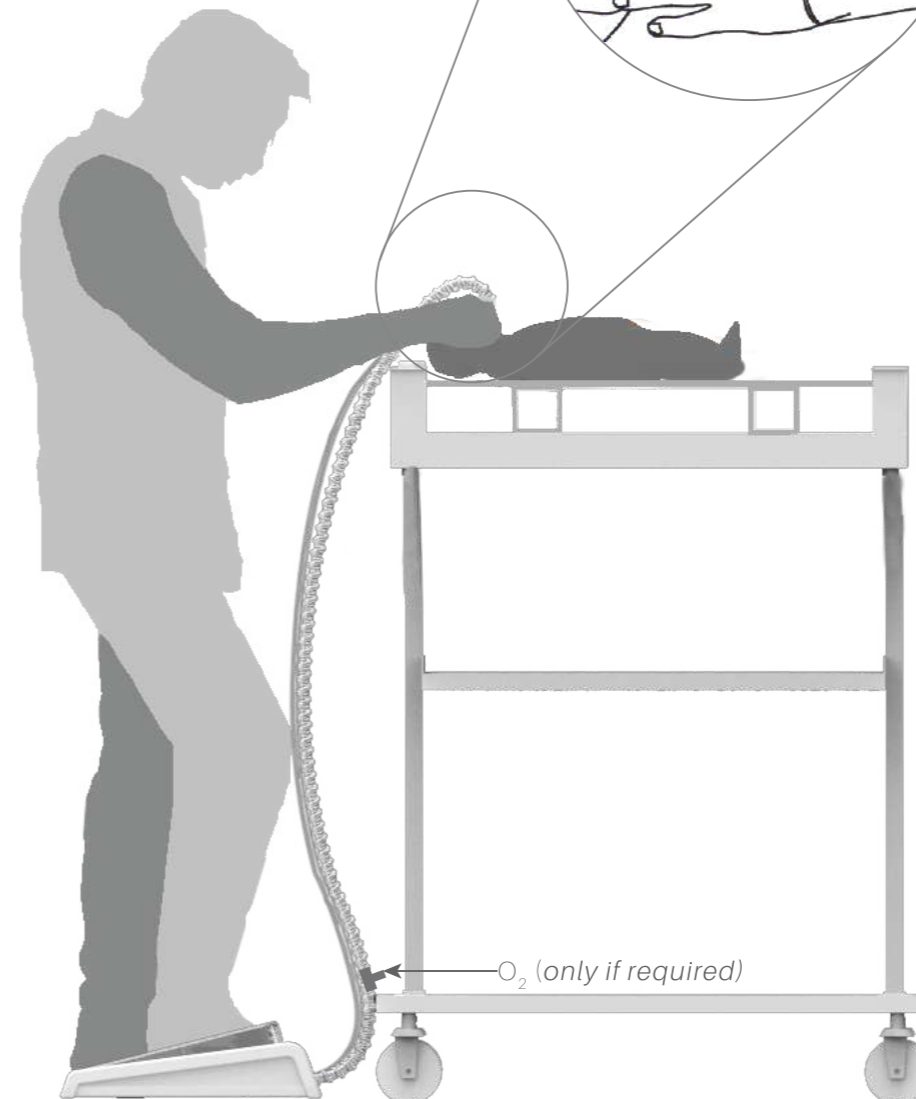
Always ready, always works.

No fear of power cuts

No more struggling with disconnected tubes.

Pressure limited to 150 cm H₂O: Safe for newborns.

Zero soiling design keep suction tube clean and prevents bacterial growth.



Frees one hand

Newborn resuscitation requires extensive multi-tasking while both hands are occupied with positive pressure ventilation.

NeoBreathe™, the world's first foot operated resuscitation system frees one hand from the task of bagging enabling a single operator to perform all required tasks.



Two handed
mask holding;
better seal



Single person
CPR

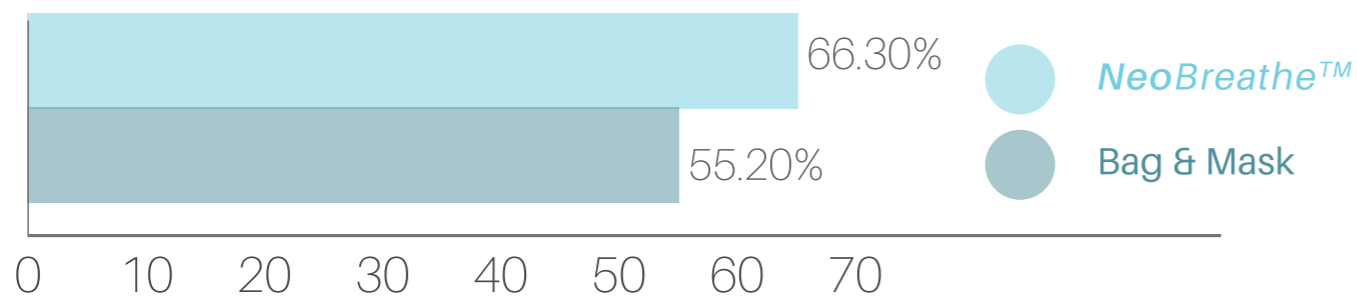
Easy neck
positioning

Reliable
integrated
suction

Auscultation
without
assistance

Evidence

Percentage of breaths delivered with tidal volume in target range* (15-21 mL)



"30 first time users were asked to ventilate a newborn mannequin while observing spirometry data in real time. NeoBreathe™ allowed these users to deliver 20% more breaths within the target tidal volume range as compared to conventional self-inflating bag and mask." Nimbalkar.S et.al (Under Review for publication.)