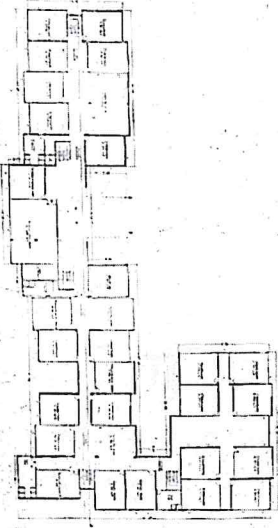


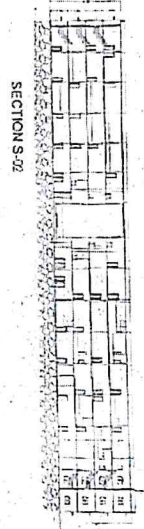
THIRD FLOOR PLAN



FIRST AND SECOND FLOOR PLAN



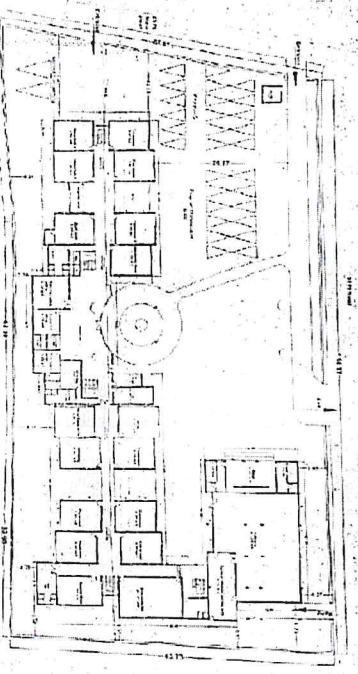
TERRACE PLAN



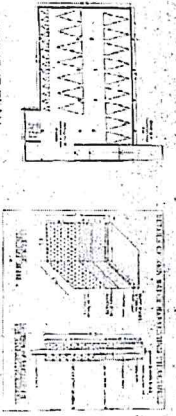
SECTION S-02



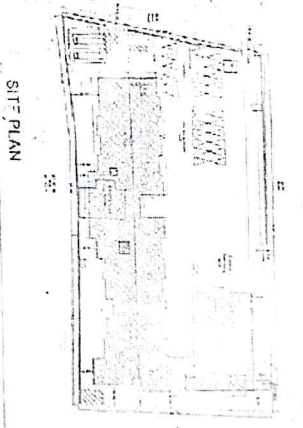
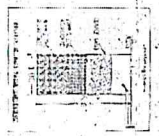
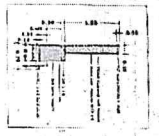
FRONT ELEVATION



GROUND FLOOR PLAN



BASEMENT PLAN



SITE PLAN

Area Statement :

Floor	Gross Area	Inductions	Net Area
Basement	606.35	0	606.35
Ground Floor	2400	12.5	2387.5
First Floor	2553	4	2549
Second Floor	2572	4	2568
Third Floor	2665	4	2661
Terrace Floor	26.12	4	22.12
Total	10542.5	20	10522.47

Production calculation
Lift 2m X 2m = 4 sqm

FAR = 10326.47 = 1.47

FAR = 7387.049

COVERAGE = 2400 X 100 = 32.50 %

PARKING = 45 Cars, 15 two wheelers and 2 bus

Schedule of openings

Doors	Windows
D- 0.9 X 2.1M	W1 - 1.5 X 1.2M
D1 - 1.8 X 2.1M	W2 - 1.5 X 1.2M
D2 - 1.8 X 2.1M	W3 - 3 X 1.5M
D3 - 0.6 X 2.1M	V - 0.8 X 0.6
D4 - 3 X 2.1M	

Owner's signature Architect's signature

Sanction Plan
S. B. Alur
BCC/EL-3,6/A-27/15
2015-2018

PROPOSED
GLENTREE ACADEMY AT CHETAN FARMS
SY. NO. 15 (OLD SY. NO. 36/2)
HALANAYAKANAHALLI VILLAGE
VARTHUR HOBSI, SANSKRTHA, SHIMHA
KARNATAKA

Principal
ALEX & ASSOCIATES
35/1, SANSKRTHA, SHIMHA
No. 36/5, Halanayakarahalli, Varthur
Hobli, Hosangur 560035

Email: principal_sri@gleentreecademy.com
Mob: 9663810004

Now site