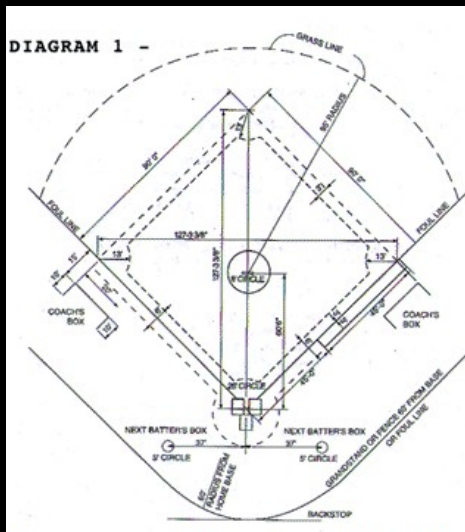
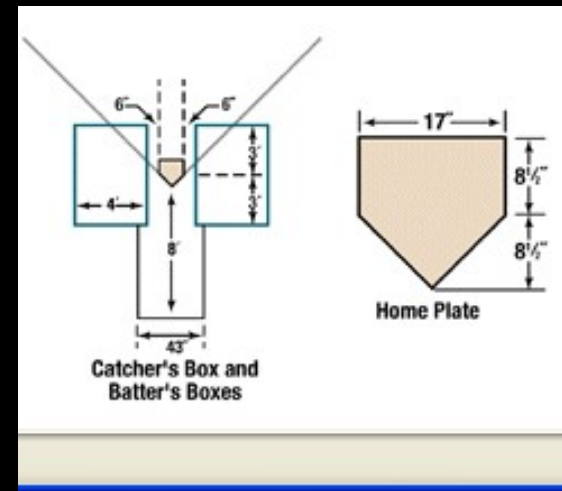




ALL PHOTOS ARE PROPERTY OF THE SPORTING NEWS



the Dead Ball era,
1900-1920: 1900 a new plate, five-sided and 17 inches across replaced the old 12 inch square, adding about 200 sq. inches to strike zone.



1.05

Home base shall be marked by a five-sided slab of whitened rubber. It shall be a 17 inch square with two of the corners removed so that one edge is 17 inches long, two adjacent sides are 8 1/2 inches and the remaining two sides are 12 inches and set at an angle to make a point. It shall be set in the ground with the point at the intersection of the lines extending from home base to first base and to third base; with the 17 inch edge facing the pitcher's plate, and the two 12 inch edges coinciding with the first and third base lines. The top edges of home base shall be beveled and the base shall be fixed in the ground level with the ground surface.

Other changes: foul tips as strikes; soft, discolored balls, some relief pitching, better defense (errors per game: 1876=12.02, 1880=8.67, 1890=6.66, 1900=4.85, 1910=3.55, 1920= 2.83, 1960= 1.75), spitballers, bigger pitchers from “Hippo” Vaughn (6'4", 215 lbs.) to Cy Young (6'2", 210).

Total Assists - Career

	<u>Catcher</u>	<u>Assists</u>
1	Deacon McGuire (1884-1912) DET-N, PHI-N, CLE-A, WAS-N, BKN-N, DET-A, NY-A	1,859
2	 Ray Schalk (1912-29) CHI-A, NY-N	1,811
3	Steve O'Neill (1911-1928) CLE-A, BOS-A, NY-A, STL-A	1,698
4	Red Dooin (1902-1916) PHI-N, CIN-N, NY-N	1,590
5	Chief Zimmer (1884-1903) DET-N, CLE-N, LOU-N, PIT-N, PHI-N	1,580
6	Johnny Kling (1900-1913) CHI-N, BOS-N, CIN-N	1,552
7	Ivey Wingo (1911-1929) STL-N, CIN-N	1,487
8	Wilbert Robinson (1886-1902) PHI-a, BAL-N, STL-N, BAL-A	1,454
9	Bill Bergen (1901-1911) CIN-N, BKN-N	1,444
10	Wally Schang (1913-1931) PHI-A, BOS-A, NY-A, STL-A, DET-A	1,420



MATHEWSON WAS MASTERFUL, SHUTTING OUT THE A'S THREE TIMES IN FIVE DAYS.



MATHEWSON, N. Y. NAT'L





The World Series becomes a national institution







MATHEWSON WAS MASTERFUL, SHUTTING OUT THE A'S THREE TIMES IN FIVE DAYS.

C

lassics





YANKEE JOY IN '62 MEANT DEJECTION FOR THE BAY AREA FAITHFUL.



FISK'S HISTORIC HOMER ENDED AN UNFORGETTABLE GAME 6.

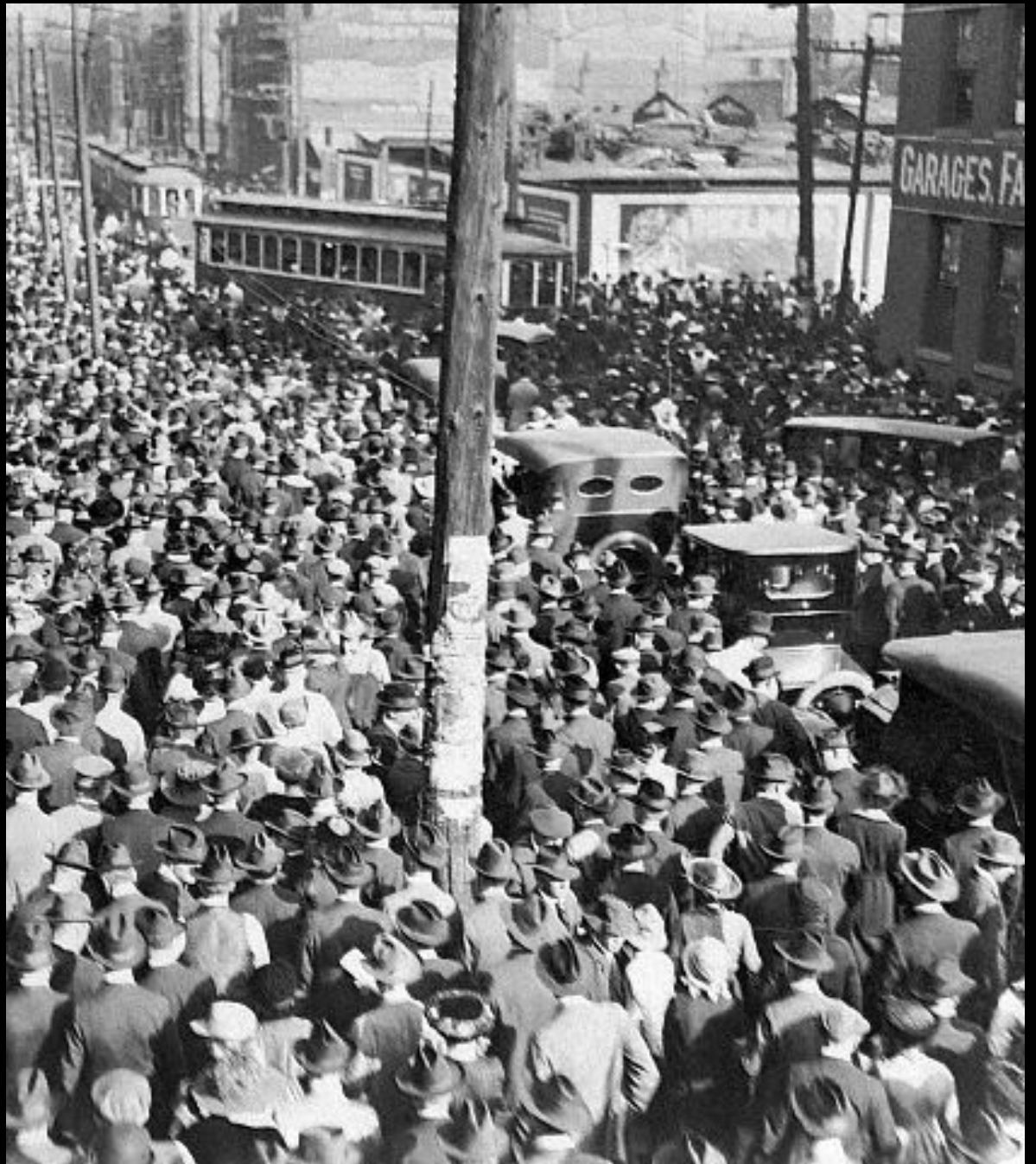
The ballpark becomes a civic landmark



The grandstand at Forbes Field

A visit to the ballpark, Outlook reported in 1913, promoted “social solidarity” and “due respect for lawful authority,” providing a “safety-valve” of “momentary relief from the strain and intolerable burden” of city life. Journalists found democracy in the baseball crowd, with “some of the best-known business and professional men...standing side by side with their clerks and stenographers. There was a portly banker next to a ragged bootblack, a street-car conductor and an army officer.” They praised the ballpark for accommodating a “democratic amusement” that brought together “the banker and the office-boy, the millionaire and the chauffeur, the professor and the laborer.” “Business and professional men,” Harpers Weekly reported in 1910, stand “shoulder to shoulder with the street urchin,” cheering at the ballpark. The Atlantic Monthly praised the baseball park as our “national contribution to the building arts,” housing “the religion of democracy” for crowds “made up of all conditions, ages, races, temperaments, and states of mind.” Connie Mack was thus repeating a truism when in 1950 he recalled the “great democracy of fans in the grandstands and in the bleachers.”

Crowd outside
the first game
of the 1919
World Series
in Cincinnati





“It never occurred to me that one man could start to play with the faith of fifty million people - with the single mindedness of a burglar blowing a safe.”

F. Scott
Fitzgerald, The
Great Gatsby

A crisis of civic and market?

A) the black mark of the reserve clause

B) What the New York Times would call the “hippodroming of the sport,” manipulating it for the purpose of maximizing profit - either by monopolizing, breaking monopoly, or colluding within the monopoly

C) the threat of gambling and especially the 1919 fix that highlighting both A and B.

the Players' Fraternity (1912) and The Federal League challenge (1914-1915); falling salaries after 1903, then doubled between 1913-1915; fearful of losing players to the newly-forming Federal League, the owners granted concessions to the PF, including free agency for ten-year veterans.



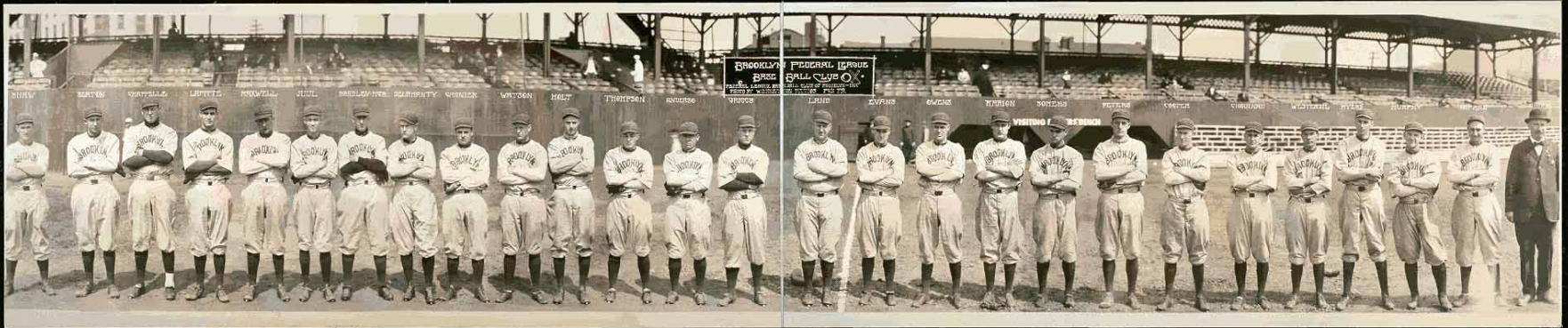
Dave Fultz,
organizer of
Players Fraternity

Newark
Peppers of
the Federal
League





The Federal League challenge (1914-1915); James Gilmore, Chicago steel maker, brought new money, from mass production, mass marketing industries, into the game; the Ward brothers (Tip-Top bread), Phil Ball (ice), Otto Stefel (brewing), Charles Weeghman (luncheonettes), Phil Wrigley (chewing gum). Settlement brought in several of these as new owners of Chicago Cubs and St. Louis Browns.



Brooklyn Tip-Tops



Charlie Weegman



Baseball “has been gradually taken away from the spectators and made the plaything of speculative managers.” Fans resent the “hippodroming” of the sport, with the “capitalists pulling the wires.” New York Times editorial from 1915



BIG BASEBALL NATURAL!!
 PITCHERS DUEL - BATTLE OF SHORTSTOPS
 MERLE SHIVELY vs BILLET ALLEN - SHORTY HOLLAND vs DUKE DUNCAN

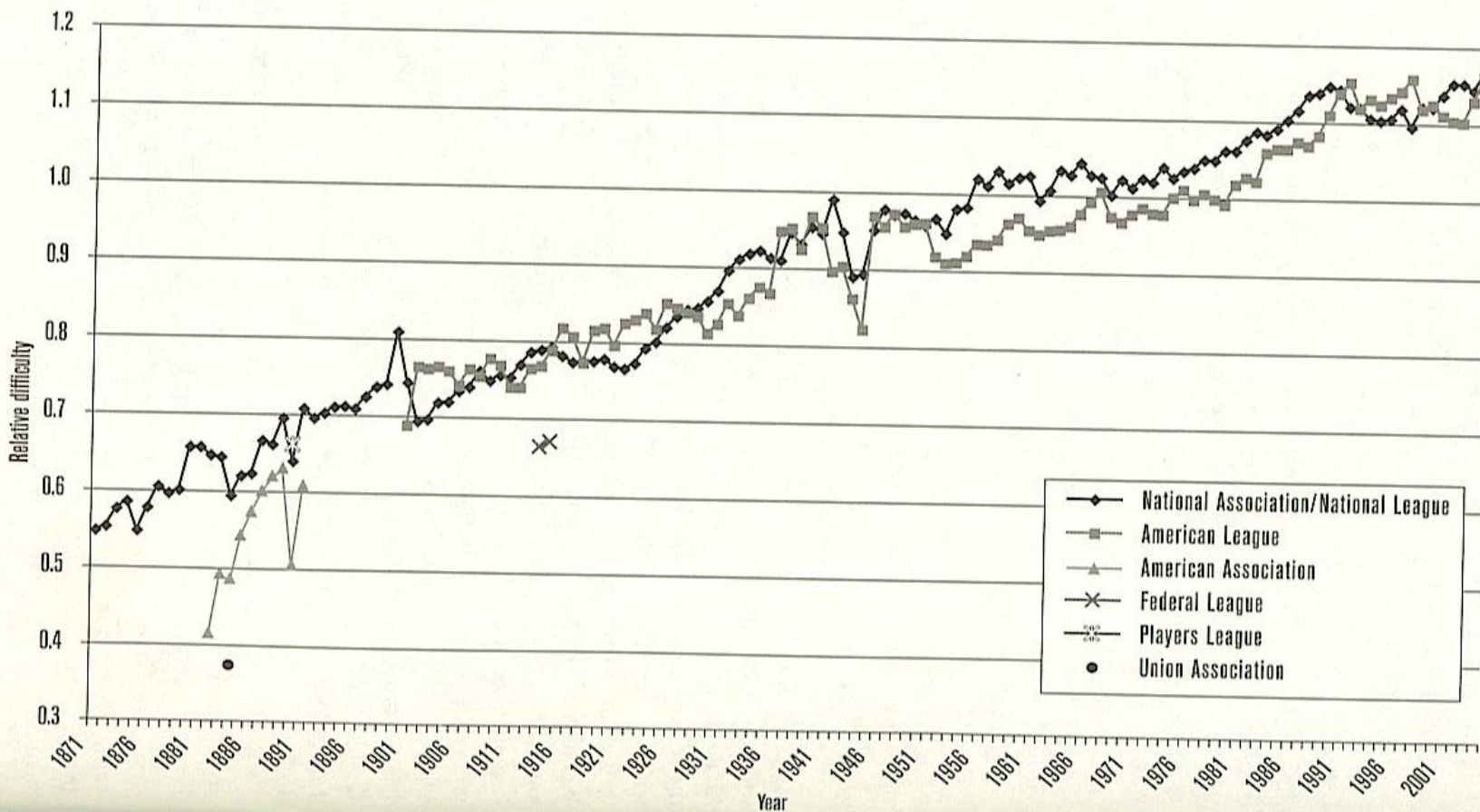
FED. LEAGUE ALL STARS
 VERSUS
IND'P'L'S CARDINALS

STATE SCHOOL PARK 7:30
THURSDAY NITE JUNE 21

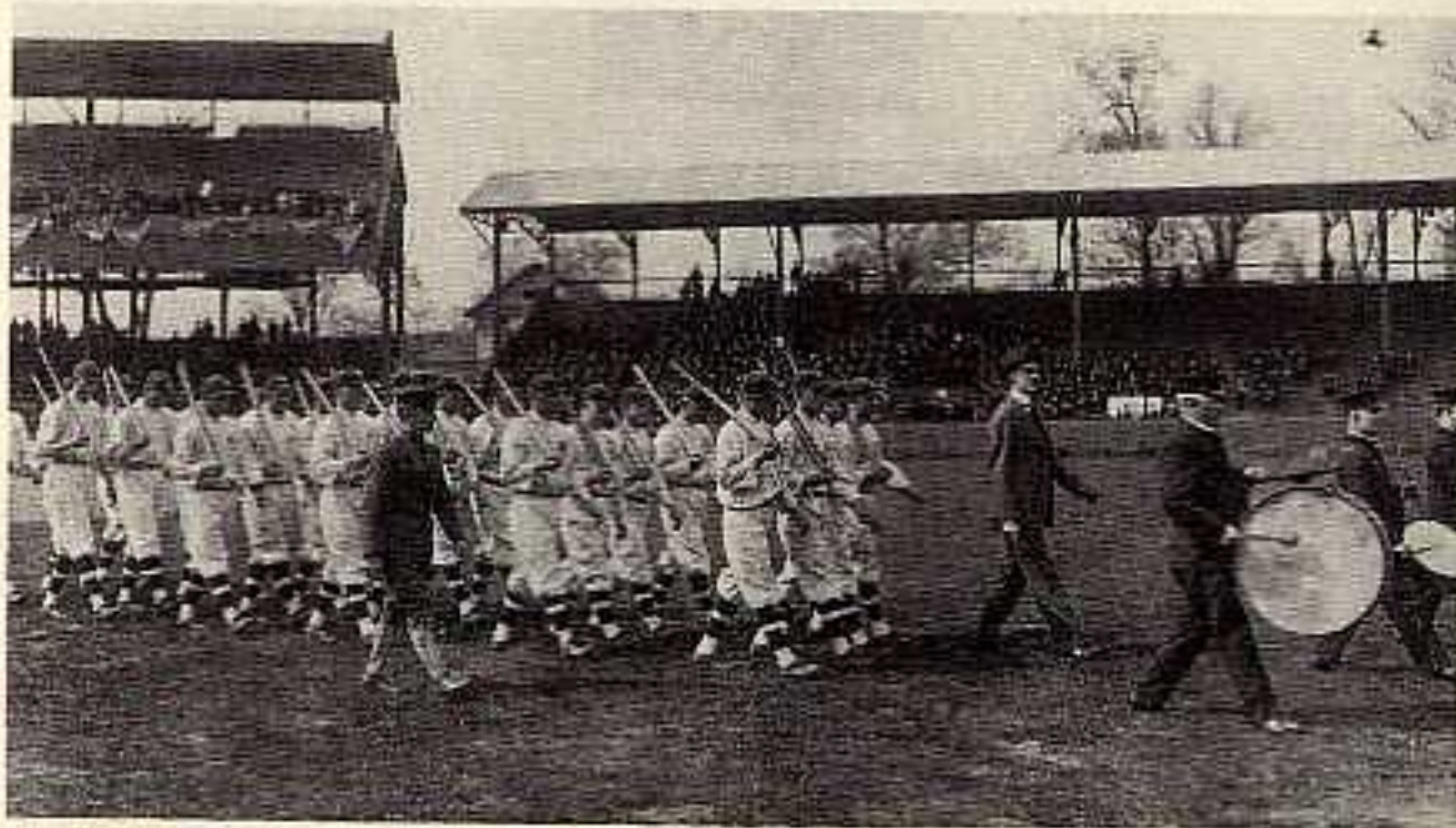
GRUDGE GAME: Previous Score ALL STARS 1, CARDINALS 0 ALL SEATS FOR ADULTS, 50c (Tax Incl.)

Four paragraphs, plus

FIGURE BP.2 League difficulty factors, with 1975 American League as 1

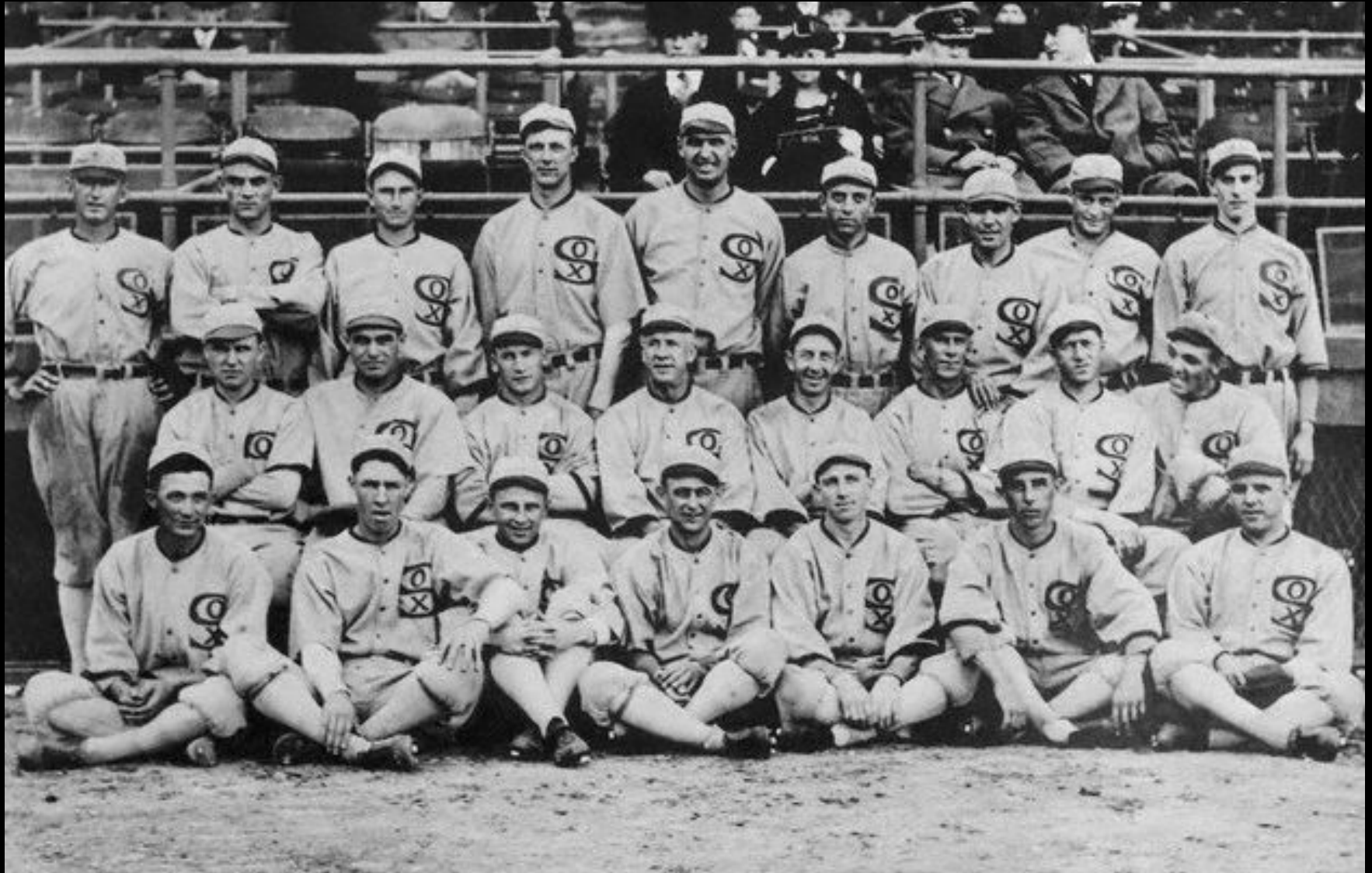


A Chance to Prove Its Civic Mettle? Baker's "work or fight" rule (1918): shortened season, marginal players; the shipyard teams



Assistant Secretary of the Navy Franklin D. Roosevelt leading the Washington Senators in military drill during World War I. Source: *The Sporting News*.

the \$100,000 conspiracy; Gandil and the gamblers; Comiskey and his players, the eight (Cicotti, Williams, Risberg, Gandil, Jackson, Weaver, Felsch, McMullin); Arnold Rothstein.



McMullin?

Cicotte on right



Happy Felsch Centerfielder of Black Sox



	R	H	E	PITCHERS (inn.pit.)	HOME RUNS (men on)	HIGHLIGHTS
Cincinnati (N.L.) defeats Chicago (A.L.) 5 games to 3						
GAME 1 - OCTOBER 1						
CHI	A	1	6	1	Cicotte (3.2), Wilkinson (3.1), Lowdermilk (1)	The Reds' five runs off Cicotte in the fourth breaks a 1-1 deadlock as Ruether holds Chicago to six hits.
CIN	N	9	14	1	Ruether (9)	
GAME 2 - OCTOBER 2						
CHI	A	2	10	1	Williams (8)	Kopf's two-run triple in the fourth caps a three-run inning after Williams allows three walks.
CIN	N	4	4	2	Sallee (9)	
GAME 3 - OCTOBER 3						
CIN	N	0	3	1	Fisher (7), Luque (1)	Kerr allows three hits in shutting out the Reds. Gandil's double drives in Jackson and Felsch in the second.
CHI	A	3	7	0	Kerr (9)	
GAME 4 - OCTOBER 4						
CIN	N	2	5	2	Ring (9)	Ring allows three hits and posts a shutout as the Reds score twice in the fifth on Cicotte's two errors.
CHI	A	0	3	2	Cicotte (9)	
GAME 5 - OCTOBER 6						
CIN	N	5	4	0	Eller (9)	Four runs in the sixth capped by Roush's triple breaks open a tie game. Eller strikes out six in a row early in the game but loses his shutout in the ninth.
CHI	A	0	3	3	Williams (8), Mayer (1)	
GAME 6 - OCTOBER 7						
CHI	A	5	10	3	Kerr (10)	Gandil singles home Weaver in the tenth with the deciding run.
CIN	N	4	11	0	Ruther (5), Ring (5)	
GAME 7 - OCTOBER 8						
CHI	A	4	10	1	Cicotte (9)	Shano Collins scores the deciding run on Jackson's single as Cicotte scatters seven hits and holds the Reds to one run in the sixth.
CIN	N	1	7	4	Sallee (4.1), Fisher (0.2), Luque (4)	
GAME 8 - OCTOBER 9						
CIN	N	10	16	2	Eller (9)	The Reds score four times in the first and wrap up the series on a 16-hit attack paced by Roush's three hits and four RBI's. (Williams along with Cicotte, Gandil, Felsch, Jackson, McMullin, Risburg and Weaver were later barred for life for their part in what turned out to be a "Fixed Series.")
CHI	A	5	10	1	Williams (0.1), James (4.2), Wilkinson (4)	

Team Totals

CIN	N	W	AB	H	2B	3B	HR	R	RBI	BA	BB	SO	ERA
CHI	A	5	251	64	10	7	0	35	33	.255	25	22	1.63
		3	263	59	10	3	1	20	17	.224	15	30	3.68

Individual Batting

CINCINNATI (N.L.)

	AB	H	2B	3B	HR	R	RBI	BA
M. Rath, 2b	31	7	1	0	0	5	2	.226
J. Daubert, 1b	29	7	0	1	0	4	1	.241
H. Groh, 3b	29	5	2	0	0	6	2	.172
G. Neale, of	28	10	1	1	0	3	4	.357
E. Roush, of	28	6	2	1	0	6	7	.214
L. Kopf, ss	27	6	0	2	0	3	2	.222
P. Duncan, of	26	7	2	0	0	3	8	.269
B. Rariden, c	19	4	0	0	0	0	2	.211
I. Wingo, c	7	4	0	0	0	1	1	.571
H. Eller, p	7	2	1	0	0	2	0	.286
D. Ruether, p	6	4	1	2	0	2	4	.667
J. Ring, p	5	0	0	0	0	0	0	.000
S. Sallee, p	4	0	0	0	0	0	0	.000
S. Magee	2	1	0	0	0	0	0	.500
R. Fisher, p	2	1	0	0	0	0	0	.500
D. Luque, p	1	0	0	0	0	0	0	.000
J. Smith	0	0	0	0	0	0	0	.000

Errors: H. Groh (2), J. Daubert (2), M. Rath (2), E. Roush (2), R. Fisher, L. Kopf, G. Neale, B. Rariden

Stolen bases: M. Rath (2), E. Roush (2), G. Neale, B. Rariden, J. Daubert

CHICAGO (A.L.)

	AB	H	2B	3B	HR	R	RBI	BA
B. Weaver, 3b	34	11	4	1	0	4	0	.324
J. Jackson, of	32	12	3	0	1	5	6	.375
E. Collins, 2b	31	7	1	0	0	2	1	.226
C. Gandil, 1b	30	7	0	1	0	1	5	.233
H. Felsch, of	26	5	1	0	0	2	3	.192
S. Risberg, ss	25	2	0	1	0	3	0	.080
R. Schalk, c	23	7	0	0	0	1	2	.304
N. Leibold, of	18	1	0	0	0	0	0	.056
S. Collins, of	16	4	1	0	0	2	0	.250
E. Cicotte, p	8	0	0	0	0	0	0	.000
D. Kerr, p	6	1	0	0	0	0	0	.167
L. Williams, p	5	1	0	0	0	0	0	.200
E. Murphy	2	0	0	0	0	0	0	.000
B. James, p	2	0	0	0	0	0	0	.000
F. McMullin	2	1	0	0	0	0	0	.500
R. Wilkinson, p	2	0	0	0	0	0	0	.000
B. Lynn, c	1	0	0	0	0	0	0	.000

Errors: S. Risberg (4), E. Cicotte (2), E. Collins (2), H. Felsch (2), C. Gandil, R. Schalk

Stolen bases: S. Risberg, R. Schalk, N. Leibold, C. Gandil, E. Collins

Individual Pitching

CINCINNATI (N.L.)

	W	L	ERA	IP	H	BB	SO	SV
H. Eller	2	0	2.00	18	13	2	15	0
J. Ring	1	1	0.64	14	7	6	4	0
D. Ruether	1	0	2.57	14	12	4	1	0
S. Sallee	1	1	1.35	13.1	19	1	2	0
R. Fisher	0	1	2.35	7.2	7	2	2	0
D. Luque	0	0	0.00	5	1	0	6	0

CHICAGO (A.L.)

	W	L	ERA	IP	H	BB	SO	SV
E. Cicotte	1	2	2.91	21.2	19	5	7	0
D. Kerr	2	0	1.42	19	14	3	6	0
L. Williams	0	3	6.61	16.1	12	8	4	0
R. Wilkinson	0	0	3.68	7.1	9	4	3	0
B. James	0	0	5.79	4.2	8	3	2	0
E. Mayer	0	0	0.00	1	0	1	0	0
G. Lowdermilk	0	0	9.00	1	2	1	0	0

Shoeless
Joe Jackson





Eddie Collins, one of the “Clean Sox”



Happy Felsch



Swede Risberg



Ray Schalk, one of the Clean Sox, catching a ball dropped from the top of the Tribune Tower

the urban demimonde and the Hal Chases of the world; McGraw and the 1908 pennant race (bribing Phillies and Braves), the Cobb-Lajoie-Chalmers affair, Chase's own checkered career, Cobb and Speaker in 1926.



Cobb and
Speaker has also
been implicated
in betting
scandals.



Player Register

MAGGERT-MAISEL 1055

YEAR	TML	G	AB	R	H	2B	3B	HR	RBI	BB	SO	AVG	OBP	SLG	PRO*	B/A	SB	CS	SBR	FA	FR	G/POS	TPR	
■ HARL MAGGERT																								
Maggert, Harl Wanan b: 6/4/14, Los Angeles, Cal. d: 7/18/86, Citrus Heights, Cal. BR/1R, 6', 190 lbs. Deb: 4/19/38 F																								
1938	Bos-N	66	89	12	25	3	0	3	19	10	20	.281	.354	.416	123	3	0			.944	0	O-10/3-8	0.2	
■ STUBBY MAGNER																								
Magner, Edmund Burke b: 5/20/1868, Kalamazoo, Mich. d: 9/6/56, Chillicothe, Ohio BR/1R, 5'7", 135 lbs. Deb: 7/12/11																								
1911	NY-A	19	33	3	7	0	0	4	4		4	.212	.297	.212	40	-8	1			.970	-0	S-8/2-5	-0.3	
■ JOHN MAGNER																								
Magner, John T. b: 1865, St. Louis, Mo. Deb: 7/14/1879 U																								
1879	Cin-N	1	4	0	0	0	0	0	1	0	1	.000	.000	.000	-99	-1			.500	-0	/O-1	-0.1		
■ GEORGE MAGOON																								
Magoon, George Henry "Maggie" or "Topsy" b: 3/27/1875, St. Albans, Maine d: 12/6/43, Rochester, N.H. BR/1R, 5'10", 160 lbs. Deb: 6/28/1898																								
1898	Bos-N	83	343	35	77	7	1	39	30		30	.224	.293	.254	57	-19	7			.925	13	S-83	-0.1	
1899	Bos-N	62	207	26	53	8	3	0	31	25		.256	.333	.324	62	-5	7			.923	5	S-52	0.5	
	Chi-N	50	189	24	43	5	1	0	21	24		.228	.333	.265	67	-7	5			.806	0	S-59	0.3	
	Yr	121	396	50	96	13	4	0	52	50		.242	.344	.295	75	-12	12			.809	12	S-121	0.8	
1901	Cin-N	127	460	47	116	16	7	1	53	52		.252	.331	.324	97	-1	15			.919	-20	S-112/2-15	-1.1	
1902	Cin-N	45	162	29	44	9	2	0	23	13		.272	.344	.352	105	1	7			.930	4	S-115/3	0.7	
1903	Cin-N	42	139	6	30	6	0	0	9	19		.216	.314	.259	68	2				.871	-5	S-23/3-9	-0.2	
	Chi-A	94	334	32	76	11	3	0	25	30		.228	.303	.278	79	-6	4			.936	-21	2-94	-2.6	
Total		5	522	1834	189	439	62	16	2	201	194		.239	.321	.294	78	-15	47			.916	-8	S-282/2-182/3-9	-2.5
■ TOM MAGRANN																								
Magrann, Thomas Joseph b: 12/9/63, Hollywood, Fla. BR/1R, 6'3", 177 lbs. Deb: 9/7/89																								
1889	Cle-A	9	10	0	0	0	0	0	0	0	4	.000	.000	.000	-98	-3	0	0	0	1.000	3	/C-9	0.1	
■ FREDDIE MAQUIFF																								
Maquiff, Freddie Edward b: 6/18/1885, Boston, Mass. d: 11/2/51, Boston, Mass. BR/1R, 6'11", 156 lbs. Deb: 9/25/99																								

Billy Maharg

MAHARG, WILLIAM B. Mar. 19, 1887, Philadelphia, Pa.

TR

1912 DET A	1	1	0	0	0	0	0	0	0	0	0	0.0	0	0	0	0	0	0	0	.000	.000	0	0	3B-1
1916 PHI N	1	1	0	0	0	0	0	0	0	0	0	0.0	0	0	0	0	0	0	0	.000	.000	0	0	OF-1
2 yrs.	2	2	0	0	0	0	0	0	0	0	0	0.0	0	0	0	0	0	0	0	.000	.000	0	0	OF-1, 3B-1

■ BILLY MAHARG																							
Maharg, William Joseph b: 3/19/1881, Philadelphia, Pa. d: 11/20/53, Philadelphia, Pa. BR/1R, 5'10", 155 lbs. Deb: 5/16/12																							
1912	Det-A	1	1	0	0	0	0	0	0	0	0	.000	.000	.000	-99	-0	0	0	0	1.000	1	/3-1	0.0
1916	Phi-N	1	1	0	0	0	0	0	0	0	0	.000	.000	.000	-97	-0	0	0	0	.000	-0	/O-1	-0.1
Total	2	2	2	0	0	0	0	0	0	0	0	.000	.000	.000	-99	-0	0	0	0	1.000	1	/3-1	-0.1
■ RON MAHAY																							
Mahay, Ronald Matthew b: 6/28/71, Crestwood, Ill. BR/1L, 6'2", 185 lbs. Deb: 6/21/95																							
1995	Bos-A	5	20	3	4	2	0	1	3	1	6	.200	.273	.450	81	-1	0	0	0	1.000	-1	/O-5	-0.1
1997	Bos-A	28	0	0	0	0	0	0	0	0	0	---	---	---	---	---	0	0	0	1.000	-0	P-28	0.0
1998	Bos-A	29	0	0	0	0	0	0	0	0	0	---	---	---	---	---	0	0	0	1.000	-1	P-29	0.1
Total	3	62	20	3	4	2	0	1	3	2	6	.200	.304	.450	90	-0	0	0	0	.857	-1	P-57, O-5	0.0
■ TOM MAHER																							
Maher, Thomas Francis b: 7/6/1870, Philadelphia, Pa. d: 8/25/28, Philadelphia, Pa. Deb: 4/24/92																							
1892	Phi-N	1	0	0	0	0	0	0	0	0	0	---	---	---	---	---	0	0	0	.000	0	R	0.0
■ GREG MAHLBERG																							
Mahlberg, Gregory John b: 8/8/52, Milwaukee, Wis. BR/1R, 5'10", 160 lbs. Deb: 9/24/76																							
1978	Tex-A	1	1	0	0	0	0	0	0	0	0	.000	.000	.000	-99	-0	0	0	0	1.000	0	/C-1	0.0
1979	Tex-A	7	17	2	2	0	0	1	1	2	4	.118	.211	.294	35	-2	0	0	0	1.000	-2	/C-7	-0.3
Total	2	8	18	2	2	0	0	1	2	4	4	.111	.200	.278	28	-2	0	0	0	1.000	-2	/C-8	-0.3
■ DAN MAHONEY																							
Mahoney, Daniel J. b: 3/23/1864, Springfield, Mass. d: 2/1/04, Springfield, Mass. BR/1R, 5'9", 165 lbs. Deb: 8/20/1892																							
1892	Cin-N	5	21	1	4	0	1	0	1	1	4	.190	.227	.286	56	-1	0			.943	2	/C-5	0.1
1895	Was-N	6	12	2	2	0	0	0	1	0	0	.167	.167	.167	-14	-2	0			1.000	-1	/C-2, 1-1	-0.2
Total	2	11	33	3	6	0	1	0	2	1	4	.182	.206	.242	28	-3	0			.949	1	/C-7, 1-1	-0.1
■ DANNY MAHONEY																							
Mahoney, Daniel Joseph b: 9/6/1888, Haverhill, Mass. d: 9/28/60, Uxio, N.Y. BR/1R, 5'6", 145 lbs. Deb: 5/15/11																							
1911	Cin-N	1	0	0	0	0	0	0	0	0	0	---	---	---	---	---	0	0	0	.000	0	R	0.0
■ MIKE MAHONEY																							
Mahoney, George W. "Big Mike" b: 12/5/1873, Boston, Mass. d: 1/3/40, Boston, Mass. BR, 6'4", 220 lbs. Deb: 5/18/1897																							
1897	Bos-N	2	2	1	1	0	0	0	1	0		.500	.500	.500	155	0	0			1.000	0	/C-1, P-1	0.0
1898	StL-N	2	7	0	0	0	0	0	0	0		.000	.000	.000	-98	-2	0			.920	-0	/1-2	-0.2
Total	2	4	9	1	1	0	0	0	1	0		.111	.111	.111	-36	-2	0			.920	-0	/1-2, P-1, C-1	-0.2
■ JIM MAHONEY																							
Mahoney, James Thomas "Mac" b: 5/26/34, Englewood, N.J. BR/1R, 6', 175 lbs. Deb: 7/28/59 C																							
1959	Bos-A	31	23	10	3	0	0	1	4	3	7	.130	.231	.261	33	-2	0	0	0	.940	10	S-30	0.9
1961	Was-A	45	108	10	26	1	0	9	5	23		.241	.274	.259	44	-4	1	2	-1	.868	12	S-12/2-2	0.4
1962	Cle-A	41	74	12	18	4	0	3	5	14		.243	.273	.419	86	-2	0	0	0	.964	8	S-23/2-8, 3-1	0.8
1965	Hou-N	5	5	0	1	0	0	0	0	3		.200	.200	.200	14	-1	0	0	0	1.000	0	/S-5	0.0
Total	4	120	210	32	48	4	1	4	15	11	47	.229	.267	.314	57	-13	1	2	-1	.962	31	/S-89, 2-10, 3-1	2.1
■ BOB MAIER																							
Maier, Robert Philip b: 9/5/75, Danielle, N.J. d: 8/4/93, S. Plainfield, N.J. BR/1R, 5'6", 180 lbs. Deb: 4/17/45																							
1945	Det-A	132	486	58	128	25	7	1	34	38	32	.263	.317	.350	88	-8	7	11	-5	.936	-13	/3-124/O-5	-2.4
■ EMIL MAILHO																							
Mailho, Emil Pierre "Lefty" b: 12/16/09, Berkeley, Cal. BR/1L, 5'10", 165 lbs. Deb: 4/14/36																							
1936	Phi-A	21	18	5	1	0	0	0	0	5	3	.056	.261	.056			-3	0	0	1.000	-0	/O-1	-0.3
■ CHARLIE MAISEL																							
Maisel, Charles Louis b: 4/21/1894, Cotonsville, Md. d: 8/25/53, Baltimore, Md. BR/1R, 6', Deb: 10/2/75																							
1915	Bal-F	1	4	0	0	0	0	0	0	0	0	.000	.000	.000	-97	-1	0			1.000	0	/C-1	-0.1
■ FRITZ MAISEL																							
Maisel, Frederick Charles "Hash" b: 12/23/1889, Catonsville, Md. d: 4/22/67, Baltimore, Md. BR/1R, 5'7", 170 lbs. Deb: 8/11/13 F																							
1913	NY-A	51	187	33	48	4	0	0	12	34	20	.267	.371	.310	99	1	25			.950	-5	S-51	-0.3
1914	NY-A	150	546	78	131	23	9	2	47	76	69	.239	.334	.325	98	0	74	12	12	.928	-18	S-148	-0.1
1915	NY-A	135	530	77	149	16	6	4	46	48	35	.281	.342	.357	109	5	51	12	8	.940	-9	S-134	1.0
1916	NY-A	53	158	18	36	5	0	0	7	23	18	.228	.318	.259	72	-5	4			.980	-5	O-26, 3-11/2-4	-1.2
1917	NY-A	113	404	46	80	4	4	0	20	36	18	.198	.207	.228	51	-23	29			.967	-1	S-100/3-7	-2.2



Comiskey's strategy; the \$10,000 reward and controlling the investigation; the missing confessions





the National Commission (1903-1920);

Johnson's three-man judicial board with limited executive powers to impose fines and suspensions; legislative power with individual clubs



ALL PHOTOS ARE PROPERTY OF THE SPORTING NEWS

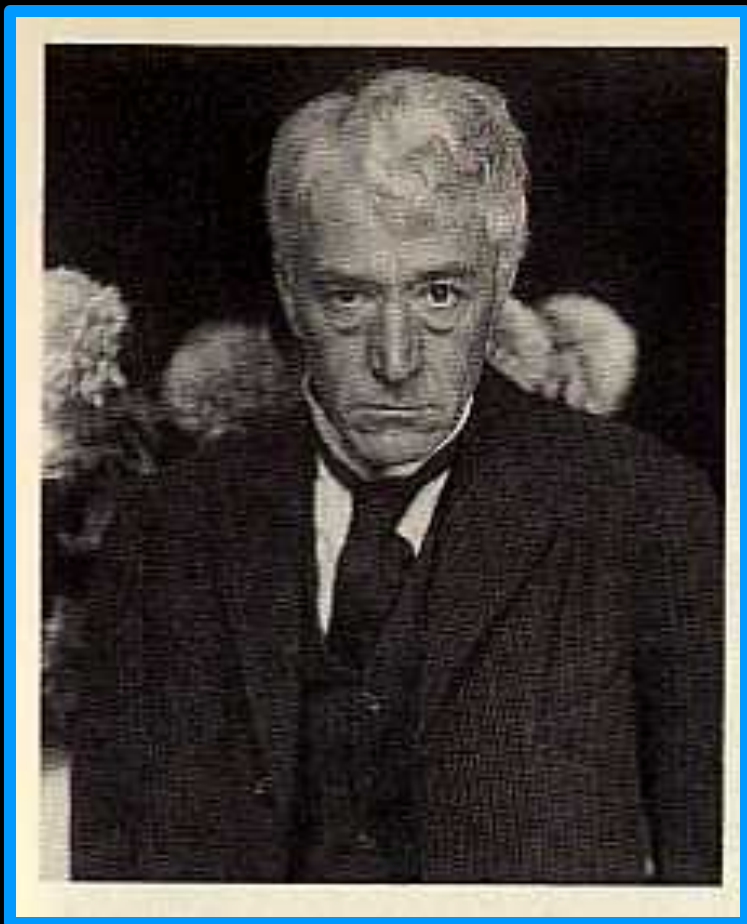


The July 1919 sale of the troublesome Carl Mays from Boston to the Yankees created a rift between Frazee, the Yankee Colonels (owners who had no loyalty to or dependence on the AL president) and Johnson. When Johnson voided the sale, the Colonels threatened to take the case to court.

Organized Baseball remembered that Judge Landis had helped them when the Baltimore club of the Federal League challenged the trust: “Both sides must understand that any blows at the thing called baseball would be regarded by this court as a blow to a national institution.” 1915



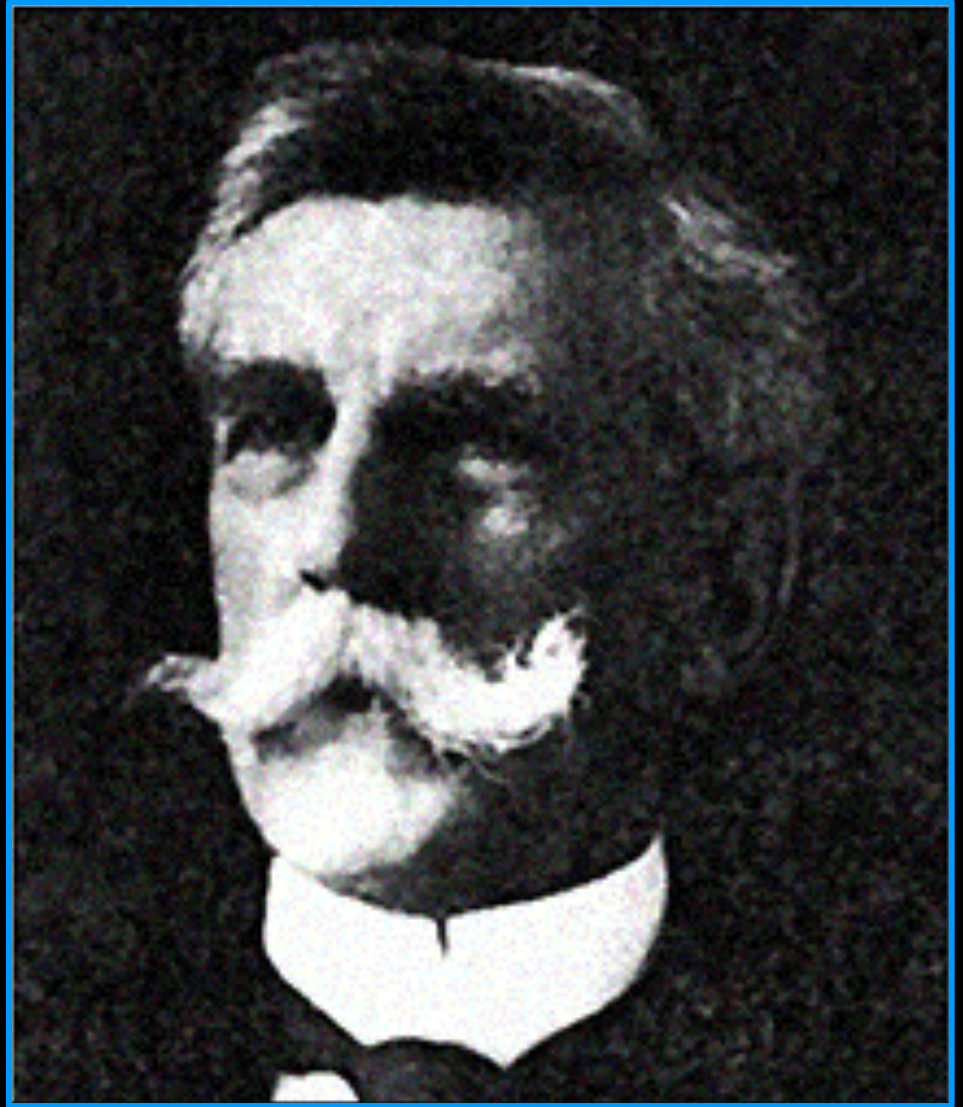
“Baseball (the business) stands indicted.” - Hugh Fullerton in The New Republic, 1920; Only “by placing the supreme jurisdiction in a group of men not financially interested in the game” could it be saved. - editorial in The Nation, 1920; Landis would serve the sport as a “skillful and ruthless cartel enforcer,” keeping the litigious owners out of the courts and establishing the commissioner’s authority.



**“the best
interests of the
game”; a
public trust or
a private one?**

the Hays model, someone not financially interested but who pays the salary?; the FTC model - keeping the cartel out of the courts

The 1922 Supreme Court decision granting anti-trust exemption (arising from Federal League suit): Justice Holmes: Baseball was not a “trade or commerce in the commonly-accepted use of the words.”



The 1922 decision protected baseball's unusual privilege of "private self-government": Landis on banishment of the eight: "*regardless of the verdict of juries, baseball is entirely competent to protect itself....*The only thing on anybody's mind now is to make and keep baseball what millions of fans...want it to be."
(italics added)





Buck Weaver in the 1950s