

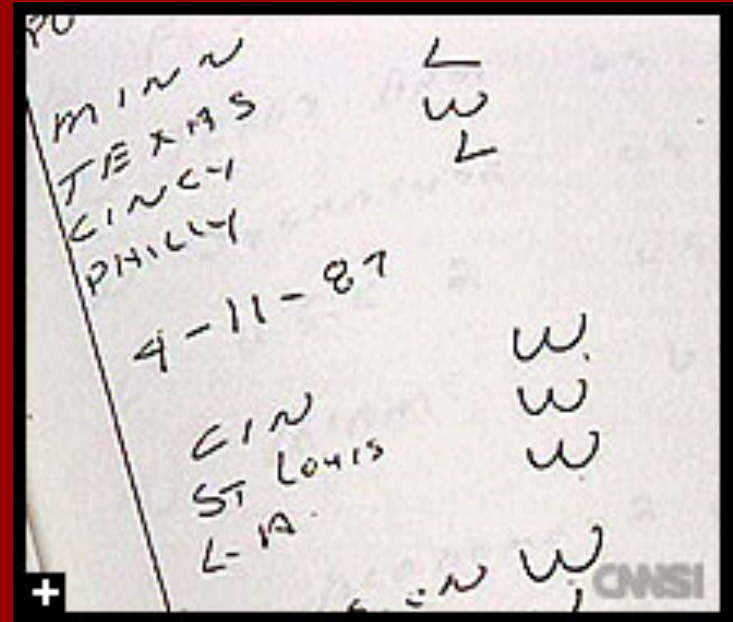
Creating the Baseball Trust

Monopoly, Monopsony, and Collusion
in Organized Baseball

Baseball's Achilles Heel or "The Pete Rose Question"

the problem of the Black Sox scandal (1919) "Betting on the result of games," Albert Spalding observed in 1911, "naturally begot collusion between those who bet their money and some of those who played the game. Per consequence, it was soon discovered that unprincipled players, under pretense of accident or inability to make points at critical stages, were 'throwing games.'" G. Edward White, Creating the National Pastime

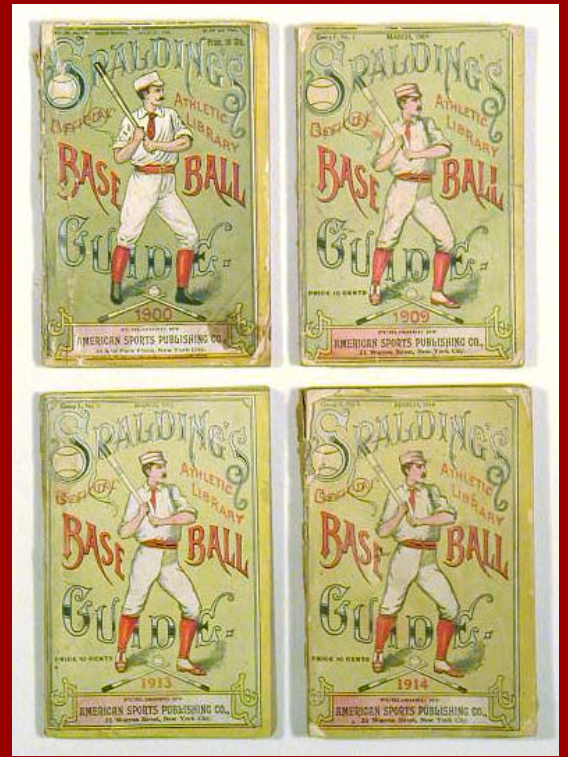
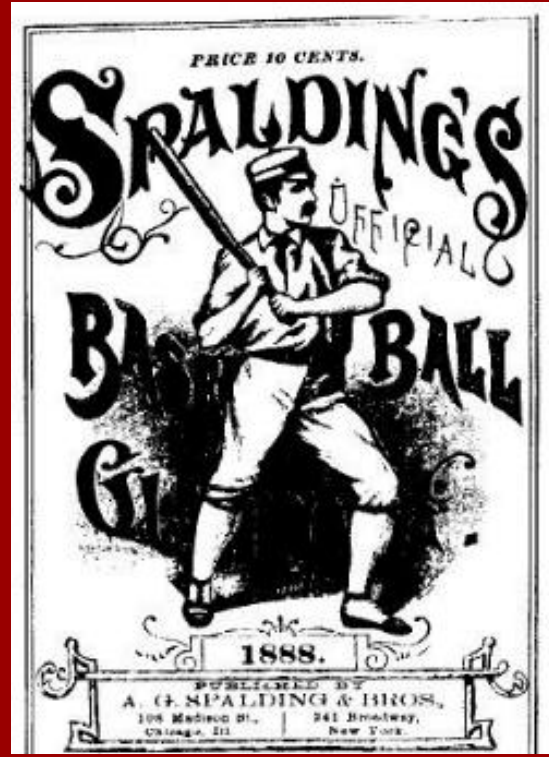
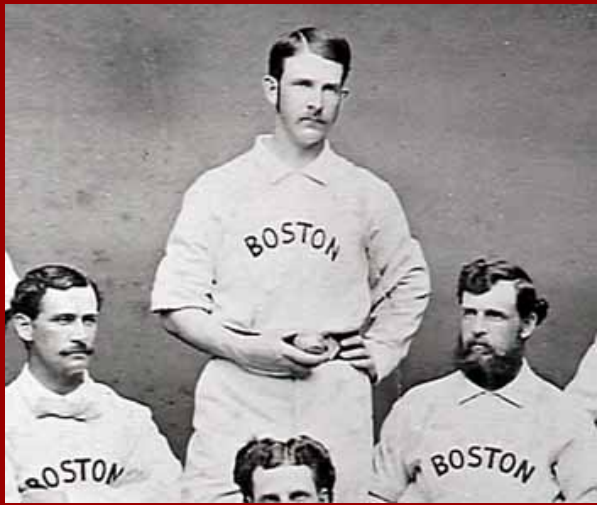
Show
Connie
Mack,
read
Seymour



Monopoly and Monopsony: The National League operated on two gentlemen's agreements – not to invade one another's territories (or to play non-NL teams in another team's city) and to not tamper with another team's players (eventually inserted as the “reserve clause” in early players' contract).

In early February in the centennial year of 1876, Chicago coal dealer William Hulbert organized the National League of Professional Baseball Clubs - today's National League. An active Republican and civic booster, Hulbert insisted that he would “rather be a lamp-post in Chicago than a millionaire in any other city.”





Having been enticed away from Boston, Spalding quickly began his transformation from star player to baseball magnate and sporting goods entrepreneur.

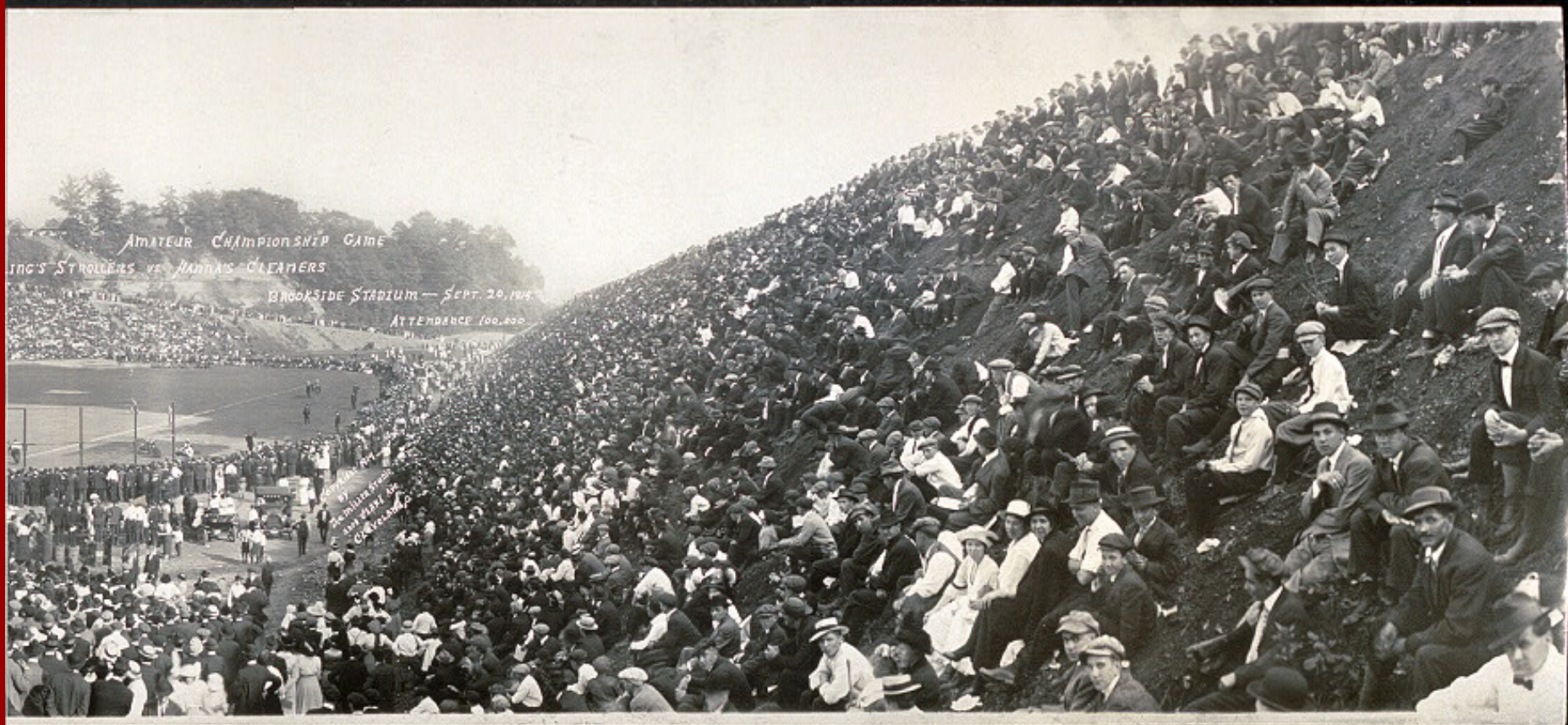


The National League's effort "to control the baseball fraternity," charged A. B. Rankin of the International Association of Professional Baseball Players as the NL absorbed its strongest clubs and refused to play the rest, was "unreasonably absurd." "Are we to submit to the caprice of a clique, or ring?" The IAPBP challenge was unsuccessful, but amateur baseball continued to thrive outside the established professional league.



Amateur Championship Game, Cleveland 1914:
Attendance estimated at 100,000

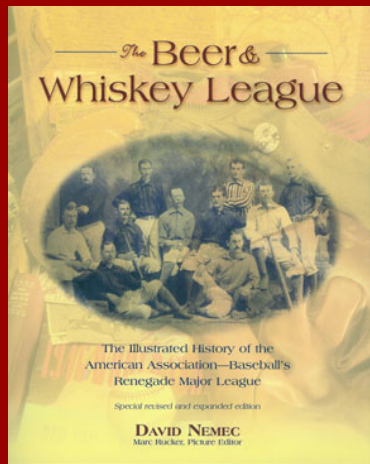




AMATEUR CHAMPIONSHIP GAME
ING'S STROLLERS vs. MAJAS' CLEANERS
BROOKSIDE STADIUM — SEPT. 20, 1904
ATTENDANCE 100,000

AMATEUR CHAMPIONSHIP GAME
ING'S STROLLERS vs. MAJAS' CLEANERS
BROOKSIDE STADIUM — SEPT. 20, 1904
ATTENDANCE 100,000

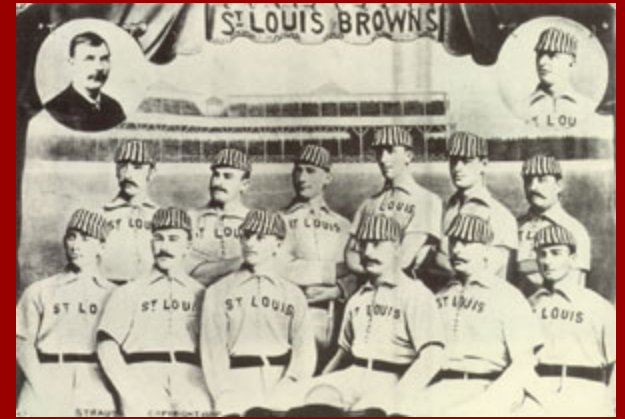
THE AMERICAN ASSOCIATION, 1881-1891 The most important challenge to the National League monopoly of professional baseball came from the American Association, known as the beer and whiskey league or the beer-ball league. This league featured beer and whiskey sales and games on Sunday - attracting those left out of the Victorian NL. It was the brainchild of Alfred Spink of St. Louis and Oliver Caylor of Cincinnati - sportswriters from German towns not in the NL and who enjoyed a “continental Sunday”



The champion St. Louis Browns of 1888 (managed by Charlie Comiskey, back row second from left



St. Louis' Chris Von der Ahe renamed his ball park, the "Coney Island of the West" and turned it into a multi-purpose amusement park including a racetrack, all-female concert band, and rides.



POS	Player	AB	BA	HR	RBI	PO	A	E	DP	TC/G	FA	Pitcher	G	IP	W	L	SV	ERA
Cin. W-55 L-25 Pop Snyder	1B D. Stearns	214	.257	0		305	5	23	16	9.5	.931	W. White	54	480	40	12	0	1.54
	2B B. McPhee	311	.228	1		274	207	42	36	6.7	.920	H. McCormick	23	220	14	11	0	1.52
	SS C. Fulmer	324	.281	0		130	243	43	14	5.3	.897							
	3B H. Carpenter	351	.342	1		137	167	60	7	4.6	.835							
	RF H. Wheeler	344	.250	1		94	11	25	1	2.0	.808							
	CF J. Maculler	299	.234	0		141	13	13	2	2.1	.922							
	LF J. Sommer	354	.288	1		188	9	16	2	2.7	.925							
	C P. Snyder	309	.291	1		358	92	41	3	7.0	.916							
	P W. White	207	.266	0		23	223	11	3	4.8	.957							
	1B H. Luff	120	.233	0		266	7	23	12	11.0	.922							
P H. McCormick	93	.129	0		12	76	5	0	3.7	.946								
Phi. W-41 L-34 Lew Simmons W-20 L-19 Charlie Mason W-21 L-15	1B J. Latham	323	.285	0		792	12	23	28	11.2	.972	S. Weaver	42	371	26	15	0	2.74
	2B C. Stricker	272	.217	0		239	251	52	29	7.5	.904	B. Sweeney	20	170	9	10	0	2.91
	SS B. Say	199	.226	1		69	192	40	7	6.1	.867							
	3B F. Mann	121	.231	0		32	39	18	3	3.1	.798							
	RF B. Blakiston	281	.228	0		52	13	11	0	2.0	.855							
	CF J. Mansell	126	.238	0		49	4	14	0	2.2	.791							
	LF J. Birchall	338	.263	0		134	14	24	0	2.3	.860							
	C J. O'Brien	241	.303	3		205	66	22	1	6.5	.925							
	CO J. Dorgan	181	.282	0		158	30	30	0		.862							
	P S. Weaver	155	.232	0		16	127	9	1	3.6	.941							
P B. Sweeney	88	.159	0		9	51	6	0	3.3	.909								
SS J. Say	82	.207	0		31	76	14	10	5.5	.884								
Lou. W-42 L-38 John Dyer W-6 L-7 Bill Reccius W-24 L-18 Leach Maskrey W-12 L-13	1B G. Hecker	340	.276	3		689	22	31	43	11.2	.958	T. Mullane	55	460	30	24	0	1.88
	2B P. Browning	288	.378	5		157	127	35	19	7.6	.890	G. Hecker	13	104	6	6	0	1.30
	SS D. Mack	264	.182	0		51	161	24	9	4.8	.898	J. Reccius	13	95	4	6	0	3.02
	3B B. Schenck	231	.260	0		70	110	41	4	3.8	.814							
	RF C. Wolf	318	.299	0		71	21	10	2	1.5	.902							
	CF J. Reccius	266	.237	1		87	15	17	3	1.8	.857							
	LF L. Maskrey	288	.226	0		136	11	16	1	2.1	.902							
	C D. Sullivan	286	.273	0		294	95	54	3	8.2	.878							
	UT T. Mullane	303	.257	0		187	191	24	10		.940							
	UT J. Strike	110	.164	0		110	45	22	6		.876							
Pit. W-39 L-39 Al Pratt	1B C. Lane	214	.178	3		480	12	13	19	11.7	.974	H. Salisbury	38	335	20	18	0	2.63
	2B G. Strief	297	.195	2		241	200	40	28	6.2	.917	D. Driscoll	23	201	13	9	0	1.21
	SS J. Peters	333	.288	0		90	280	49	21	5.4	.883	H. Arundel	14	120	4	10	0	4.65
	3B J. Battin	133	.211	1		62	108	24	5	5.7	.876							
	RF E. Swartwood	325	.329	5		99	9	29	2	1.9	.788							
	CF J. Leary	257	.292	2		26	2	9	0	1.4	.757							
	LF M. Mansell	347	.277	2		159	16	36	1	2.7	.829							
	C B. Taylor	299	.281	4		116	40	25	0	6.7	.862							
	P H. Salisbury	145	.152	0		10	96	11	1	3.1	.906							
	OF C. Morton	103	.282	0		31	9	9	0	2.0	.816							
C R. Kemmler	99	.253	0		123	37	14	1	7.6	.920								
C J. Keenan	96	.219	1		142	21	17	3	8.2	.906								
P D. Driscoll	80	.138	1		4	50	7	1	2.7	.885								
St. L. W-37 L-43 Ned Cuthbert W-27 L-32 Ed Brown W-10 L-11	1B C. Comiskey	329	.243	1		860	14	30	25	11.7	.967	J. McGinnis	44	379	25	17	0	2.47
	2B B. Smiley	240	.213	0		145	155	39	20	5.9	.885	J. Schappert	15	128	8	7	0	3.52
	SS B. Gleason	347	.288	1		131	294	85	23	6.5	.833							
	3B J. Gleason	331	.254	2		107	168	83	11	4.9	.768							
	RF G. Seward	144	.215	0		40	12	15	1	1.9	.776							
	CF O. Walker	318	.239	7		158	18	32	4	2.8	.846							
	LF N. Cuthbert	233	.223	0		74	12	10	0	1.6	.896							
	C S. Sullivan	188	.181	0		231	46	50	4	6.5	.847							
	P J. McGinnis	203	.217	0		13	97	11	2	2.8	.909							
	UT H. McCaffrey	153	.275	0		71	49	17	5		.876							
UT E. Fusselbach	136	.228	0		92	54	25	4		.854								
Bal. W-19 L-54 Henry Myers	1B Householder	307	.254	1		749	20	23	30	10.7	.971	D. Landis	42	341	11	27*	0	3.33
	2B G. Pearce	151	.199	0		123	99	57*	17	7.3	.796	T. Nichols	16	118	1	12	0	5.02
	SS H. Myers	294	.180	0		66	257	70	15	5.8	.822	E. Geiss	13	96	4	9	0	4.82
	3B J. Shetzline	282	.220	0		91	121	53	9	5.1	.800							
	RF L. Brown	181	.304	1		56	16	28	1	2.3	.728							
	CF M. Cline	172	.221	0		78	16	20	1	2.9	.825							
	LF C. Waitt	250	.156	0		142	11	22	2	2.4	.874							
	C E. Whiting	308	.260	0		299	108	81	6	6.8	.834							
	P D. Landis	175	.166	0		19	101	11*	2	3.1	.916							
	30 H. Jacoby	121	.174	1		46	59	26	3		.802							
PO T. Nichols	95	.158	0		26	36	13	0		.827								

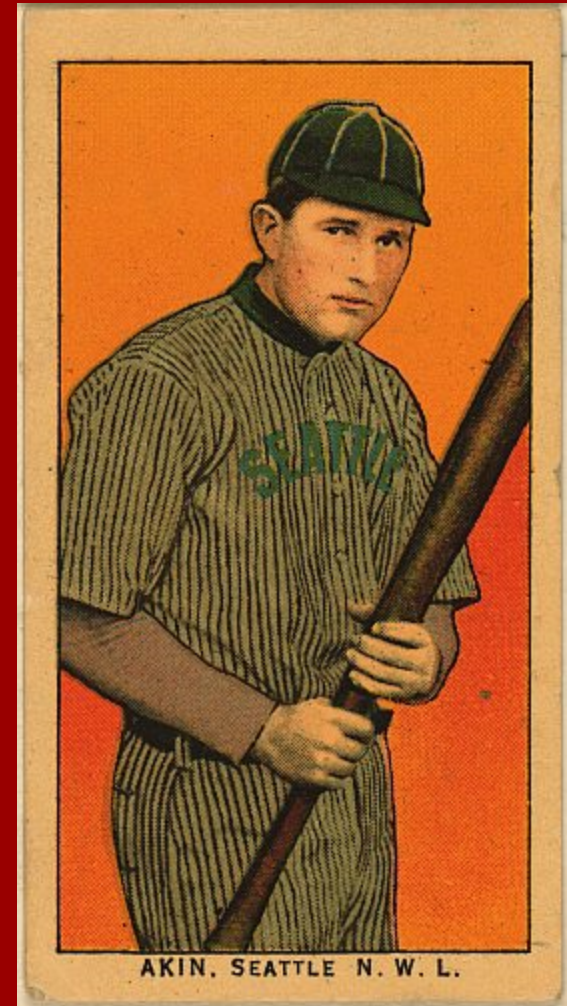
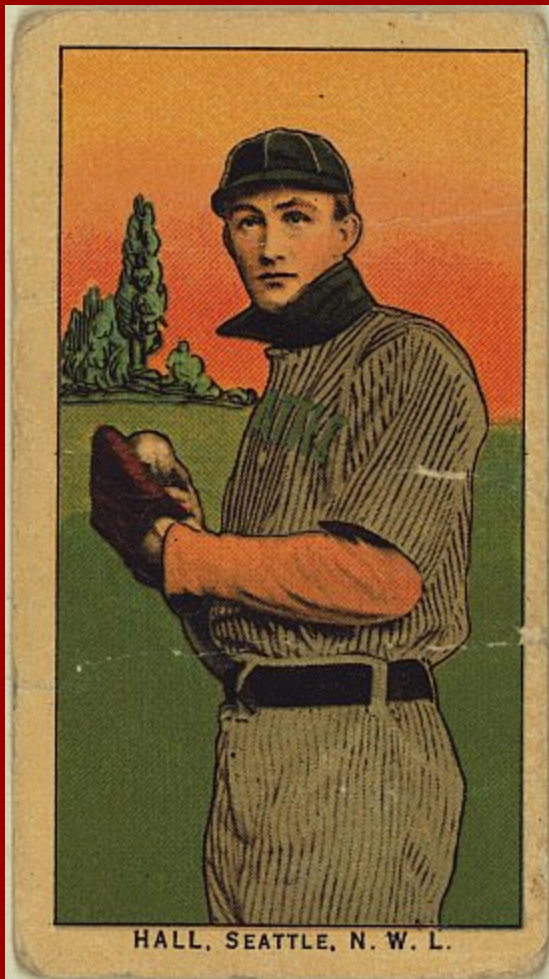
BATTING AND BASE RUNNING LEADERS													PITCHING LEADERS				
Batting Average						Slugging Average						Winning Percentage			Earned Run Average		
P. Browning, LOU	.378	P. Browning, LOU	.510	W. White, CIN	.769	D. Driscoll, PIT	1.21										
H. Carpenter, CIN	.342	E. Swartwood, PIT	.498	S. Weaver, PHI	.634	G. Hecker, LOU	1.30										
E. Swartwood, PIT	.329	B. Taylor, PIT	.455	J. McGinnis, STL	.595	H. McCormick, CIN	1.52										
J. O'Brien, PHI	.303	M. Mansell, PIT	.438	H. McCormick, CIN	.560	W. White, CIN	1.54										
C. Wolf, LOU	.299	H. Carpenter, CIN	.422	T. Mullane, LOU	.556	T. Mullane, LOU	1.88										
Home Runs				Total Bases				Wins			Saves						
O. Walker, STL	7	E. Swartwood, PIT	162	W. White, CIN	40	E. Fusselbach, STL	1										
P. Browning, LOU	5	M. Mansell, PIT	152	T. Mullane, LOU	30												
E. Swartwood, PIT	5	B. Taylor, PIT	148	S. Weaver, PHI	26												
B. Taylor, PIT	4	P. Browning, LOU	147	J. McGinnis, STL	25												
		B. Taylor, PIT	136	H. Salisbury, PIT	20												
Runs Batted In				Stolen Bases				Strikeouts			Complete Games						
(not available)				(not available)				T. Mullane, LOU	170	W. White, CIN	52						
				H. Salisbury, PIT	135	T. Mullane, LOU	51										
				J. McGinnis, STL	134	J. McGinnis, STL	42										
				W. White, CIN	122	S. Weaver, PHI	41										
				S. Weaver, PHI	104	H. Salisbury, PIT	38										
Hits				Base on Balls				Fewest Hits per 9 Innings			Shutouts						
H. Carpenter, CIN	120	J. Gleason, STL	27	G. Hecker, LOU	6.49	W. White, CIN	8										
P. Browning, LOU	109	P. Browning, LOU	26	H. McCormick, CIN	7.25	T. Mullane, LOU	5										
E. Swartwood, PIT	107	J. Sommer, CIN	24	D. Driscoll, PIT	7.25	H. McCormick, CIN	3										
						J. McGinnis, STL	3										
Home Run Percentage				Runs Scored				Fewest Walks per 9 Innings			Most Strikeouts per 9 Inn.						
O. Walker, STL	2.2	E. Swartwood, PIT	86	G. Hecker, LOU	0.43	H. Salisbury, PIT	3.63										
P. Browning, LOU	1.7	J. Sommer, CIN	82	D. Driscoll, PIT	0.54	H. Arundel, PIT	3.53										
E. Swartwood, PIT	1.5	H. Carpenter, CIN	78	S. Weaver, PHI	0.85	T. Mullane, LOU	3.32										
Doubles				Triples				Innings			Games Pitched						
M. Mansell, PIT	18	M. Mansell, PIT	16	W. White, CIN	480	T. Mullane, LOU	55										
B. Taylor, PIT	18	B. Taylor, PIT	12	T. Mullane, LOU	460	W. White, CIN	54										
P. Browning, LOU	17	E. Swartwood, PIT	11	J. McGinnis, STL	379	D. Landis, BAL, PHI	44										

1882 Cincinnati Reds, AA champions



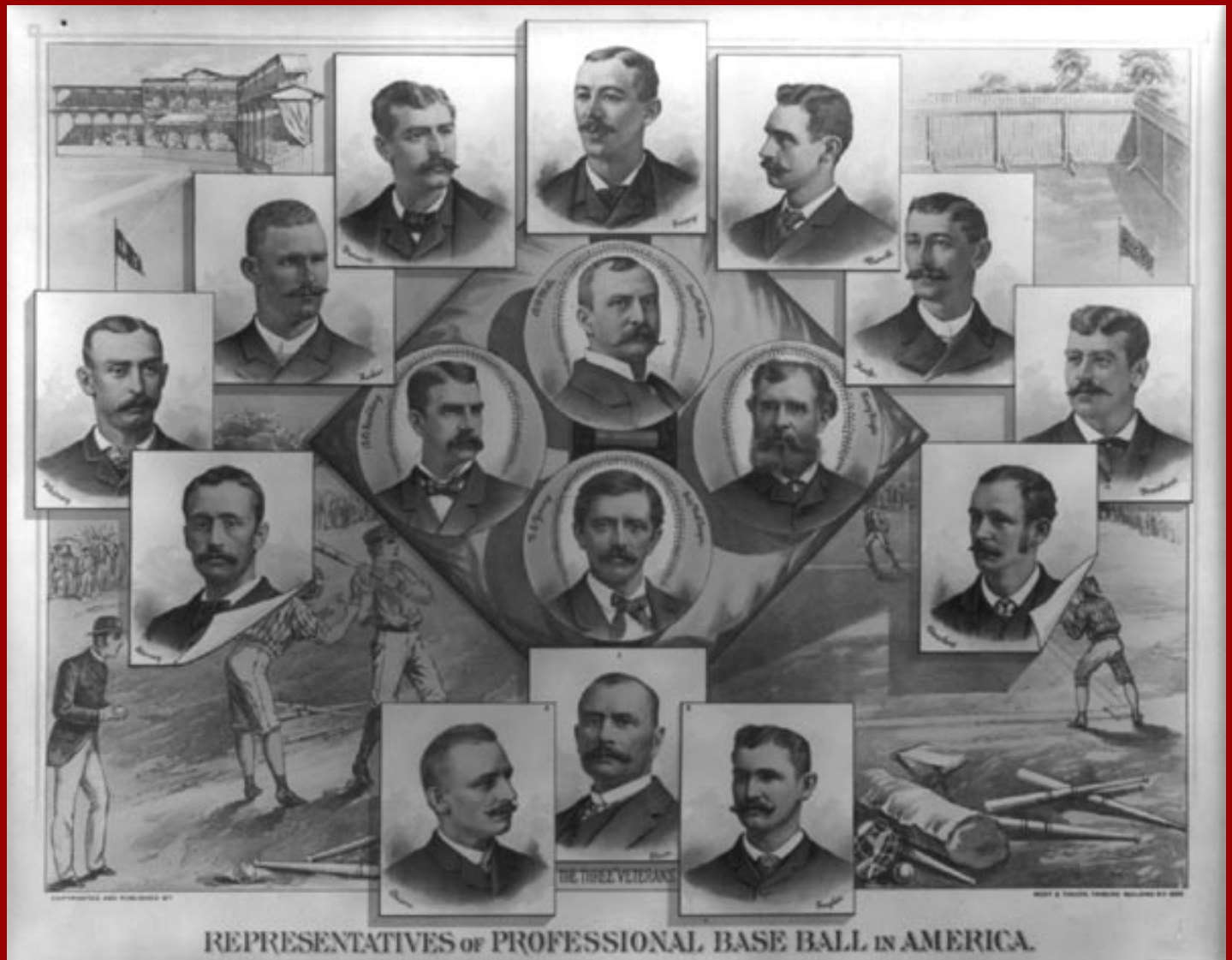
The Tripartite agreement of 1882

Extended the territorial rights and no tampering rule of the National League to the American Association and the Northwestern League





A second major challenge came in 1884 with the Union League bankrolled by Henry Lucas, a young St. Louis millionaire. Lucas was known as Saint Henry by the players for his determination to allow them to sell their services to the highest bidder. Lucas attracted top players but still lost money in 1884. The NL bought him off by allowing him to purchase the St. Louis franchise. The Cincinnati UL team played at Union Ball Park, down on the river east of town.



1884

Union Association, 1884: Its only season: note that Lucas managed the St. Louis team in the NL to a first place finish inand then managed the new St. Louis franchise in the NL to a last place finish in 1885.

POS	Player	AB	BA	HR	RBI	PO	A	E	DP	TC/G	FA	Pitcher	G	IP	W	L	SV	ERA
St. L.	1B J. Quin	429	.270	0		1033	38	62	55	11.3	.945	C. Sweeney	33	271	24	7	0	1.69
W-94 L-19	2B F. Dunlap	449	.412	13		941	300	51	54	6.9	.926	B. Taylor	33	263	25	4	4	1.68
Henry Lucas	SS M. Whitehead	393	.211	1		85	269	87	19*	4.7	.803	H. Boyle	19	150	15	3	1	1.74
	3B J. Gleason	395	.324	3		95	170	80	11	3.8	.768	P. Werden	16	141	12	1	0	1.89
	RF O. Shaffer	467	.360	2		110	24	20	3	1.5	.870	C. Hodnett	14	121	12	2	0	2.01
	CF D. Rowe	488	.293	3		146	15	9	5	1.8	.947							
	LF B. Dickerson	211	.365	0		65	12	9	2	2.0	.895							
	C G. Baker	317	.164	0		485	113	63	11	9.0	.897							
	UT H. Boyle	262	.260	4		85	49	19	7		.874							
	UT J. Brennan	231	.216	0		172	92	40	4		.868							
	P B. Taylor	186	.366	3		17	51	10	2	2.4	.872							
	P C. Sweeney	171	.316	1		23	76	6	4	3.2	.943							
Mil.	1B T. Griffin	41	.220	0		100	1	9	0	10.0	.918	H. Porter	6	51	3	3	0	3.00
W-8 L-4	2B A. Myers	46	.326	0		26	30	10	1	5.5	.848	E. Cushman	4	36	4	0	0	1.00
Tom Loftus	SS T. Sexton	47	.234	0		8	21	5	1	2.8	.853							
	3B T. Morrissey	47	.170	0		7	15	9	1	2.6	.710							
	RF E. Hogan	16	.9	0		1	6	6	1	2.8	.806							
	CF L. Baldwin	27	.222	0		6	1	2	1	1.8	.778							
	LF S. Behel	35	.242	0		4	1	0	0	6	1.000							
	C C. Croughton	39	.308	0		65	9	5	0	11.3	.937							
	PO H. Porter	40	.275	0		2	10	0	0	1.000								
Cin.	1B M. Powell	185	.319	1		463	11	30	19	11.7	.940	G. Bradley	41	342	25	15	0	2.71
W-69 L-36	2B S. Crane	309	.233	1		224	217	73	27	6.4	.858	D. Burns	40	330	23	15	0	2.46
Dan O'Leary	SS J. Jones	272	.261	32		54	140	32	9	5.5	.858	J. McCormick	24	210	21	3	0	1.59
W-33 L-29	RF B. Barber	204	.201	0		68	112	35	4	3.9	.837							
Sam Crane	RF B. Hawes	349	.278	4		74	7	17	0	1.7	.827							
W-36 L-7	CF B. Harbridge	341	.279	2		101	24	13	13	2.7	.908							
	LF L. Sylvester	333	.267	2		110	23	35	2	2.1	.792							
	C K. Kelly	142	.282	1		210	60	42	3	8.4	.865							
	OP D. Burns	350	.305	4		87	81	26	1		.866							
	UT G. Bradley	226	.190	0		82	94	24	4	4.8	.889							
	SS J. Glasscock	172	.419	2		45	107	19	2		.889							
	OF D. O'Leary	132	.258	1		48	8	9	0	2.0	.862							
	1B M. McQuery	132	.280	2		340	8	8	9	10.2	.978							
	3B E. Cleveland	115	.322	1		48	54	19	0	4.2	.845							
Bal.	1B C. Lewis	373	.228	6		923	24	45	33	11.4*	.955	B. Sweeney	62	538	40	21	0	2.59
W-58 L-47	2B D. Phelan	402	.246	3		272	251	77	33	6.0	.872	T. Lee	15	122	5	8	0	3.39
Charlie Lewis	SS L. Say	339	.239	2		103*	33*	87*	16*	5.4*	.795							
Bill Henderson	3B Y. Robinson	415	.267	2		98	163	53	10	4.4	.831							
W-53 L-35	RF B. Graham	167	.269	0		60	10	16	2	2.2	.814							
W-5 L-12	CF N. Chubbart	168	.202	0		41	10	17	0	1.5	.750							
	LF E. Seary	463	.311	2		157*	26*	38	3	2.1	.828							
	C E. Fusselbach	303	.284	1		378	137	50	5	10.5	.912							
	P B. Sweeney	296	.240	0		25	133	34	3	3.1	.823							
	CO R. Sweeney	186	.226	0		218	60	35	1		.888							
	OF H. Overbeck	125	.184	0		33	10	6	1	1.8	.878							
Bos.	1B T. Murnane	411	.235	0		588	7	31	8	9.9	.950	W. Burke	38	322	19	15	0	2.85
W-58 L-51	2B T. O'Brien	349	.263	4		257	267	90	23	6.2	.853	D. Shaw	39	316	21	15	0	1.79
Ed Hengle	SS W. Hackett	415	.243	1		125	294	71	12	4.8	.853	T. Bond	23	189	13	9	0	3.00
W-8 L-17	3B J. Irwin	432	.224	1		117	191	7	3	3.8	.780							
Tom Furniss	RF C. Crane	428	.285	12		74	21	20	2	2.0	.826							
W-4 L-6	CF M. Slattery	413	.208	0		140	26	41	4	3.2	.802							
Jake Morse	LF F. Butler	255	.169	0		56	8	15	1	1.5	.810							
W-46 L-28	C L. Brown	325	.231	1		414	117	50	6	10.8	.914							
	OF T. McCarthy	209	.215	0		39	11	13	1	1.3	.794							
	P W. Burke	184	.223	0		13	45	11	2	1.8	.841							
	PO T. Bond	162	.296	0		22	57	12	2		.868							
	P D. Shaw	153	.242	0		18	59	17	1	2.4	.819							
Chi.-Pit.	1B J. Shoenek	366	.317	2		916*	24	43	27	10.9	.956*	O. Daily	56	485	27	27	0	1.91
W-41 L-50	2B M. Hengle	274	.203	0		40	39	15	2	4.9	.840	A. Atkisson	16	140	6	10	0	1.48
Ed Hengle	SS S. Matthias	142	.275	0		30	101	25	5	4.3	.840							
W-34 L-39	3B W. Foley	71	.282	0		18	23	10	2	2.7	.804							
Joe Battin	RF J. Ellick	394	.236	0		43	13	6	1	1.1	.903							
W-1 L-5	CF C. Briggs	182	.170	1		42	6	11	5	1.6	.814							
W-6 L-6	LF Household	310	.239	1		41	3	9	2	1.3	.830							
	C B. Krieg	279	.247	0		429	115	40	3	11.2	.932							
	UT O. Daily	196	.219	0		12	105	20	2	2.4	.854							
	P T. Bond	188	.149	0		217	85	46	4		.868							
	OF H. Wheeler	158	.228	1		45	7	14	0	1.7	.774							
	OF G. Gardner	149	.255	0		32	2	5	0	1.3	.872							

POS	Player	AB	BA	HR	RBI	PO	A	E	DP	TC/G	FA	Pitcher	G	IP	W	L	SV	ERA
Was.	1B P. Baker	371	.288	1		309	12	15	13	8.6	.955	B. Wise	50	344	23	18	0	3.04
W-47 L-65	2B T. Evers	427	.232	0		326	296	94	28	6.6	.869	A. Voss	27	186	5	14	0	3.57
Mike Scanlon	SS J. Halpin	168	.185	0		37	94	31	4	4.2	.809	C. Gagus	23	177	10	9	0	2.54
	3B J. McCormick	157	.217	0		42*	42	22	5*	2.8	.792	A. Powell	18	134	6	12	0	3.42
	RF B. Wise	539	.233	2		47	21	19	5	2.0	.782	M. Lockwood	11	68	1	9	0	3.32
	CF A. Powell	191	.283	0		39	3	6	0	1.6	.875							
	LF H. Moore	461	.336	1		134	16	33	4	1.7	.820							
	C C. Fulmer	181	.276	0		213	41	17	4	8.0	.937							
	UT A. Voss	245	.192	0		166	96	32	9		.891							
	CO J. Gunson	166	.139	0		237	59	33	0		.900							
	PO C. Gagus	154	.247	0		45	47	19	1		.829							
	SS J. Dossley	134	.216	0		26	86	22	7	4.3	.836							
	1B A. Joy																	

This is the context in which the Players League emerged: Although concern about parity initiated the reserve clause, Oliver Caylor reported in 1879 that the owners quickly came to “believe that this rule will solve the problem of how to reduce wages.”

The “Second Association War” (1891) and the National

Agreement of 1892: In the wake of the Players League challenge of 1890, a new war broke out between the AA and the NL (begun when the NL’s Pittsburgh “Pirates” stole the best players of the Philadelphia Athletics of the AA); skyrocketing salaries and the threat that the reserve clause might be tested in court and found illegal encouraged a settlement; a 12-team NL and “an undisguised monopoly,” “enabled...to do about as they please without hindrance,” slashing salaries and establishing a \$2400 salary cap.

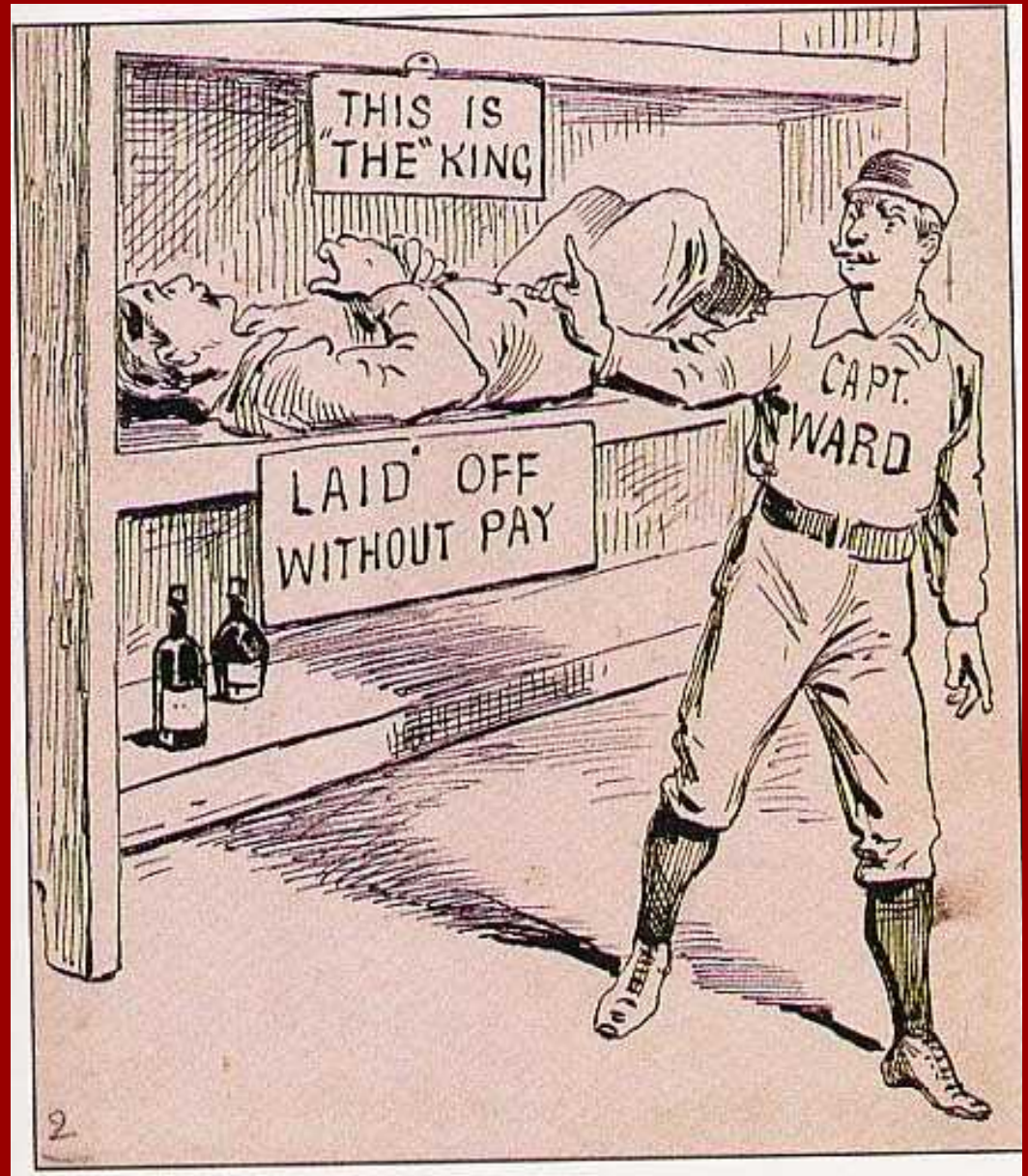


An 1890 meeting of NL and AA owners and officials

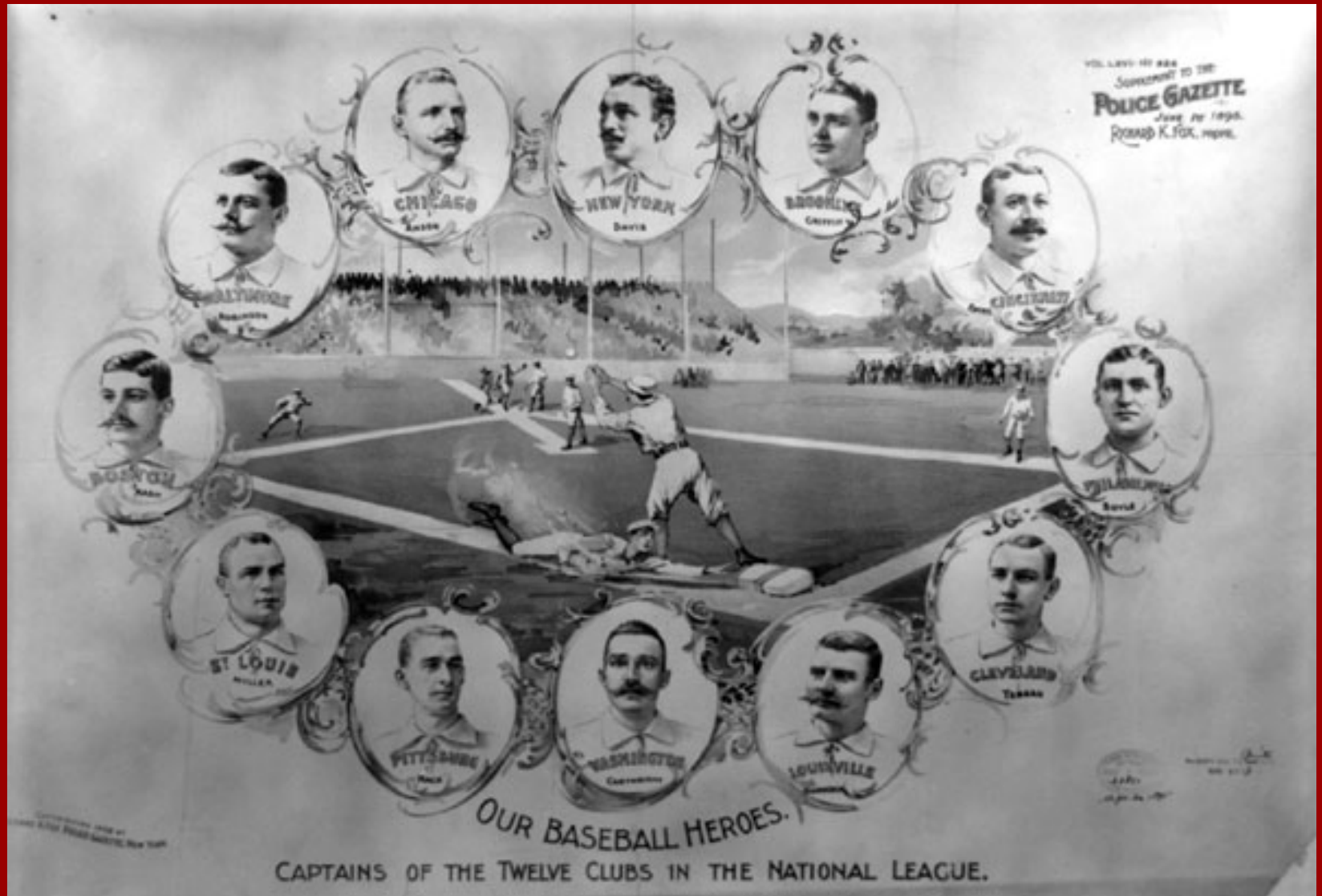
“Many people seem to think that the National League bought peace dearly in paying \$130,000 for it [paid to the five AA franchises not included in the new NL], but according to my way of figuring the price was cheap,” stated NL president Nick Young. We “will save nearly all of that during the next five years in salaries.”



“Haven’t you heard yet of the consolidation of the League and the Association into one big league...? hereafter it is the players who are to pay advance money to the magnates... Your inning is over, my boy.” Monte Ward to a player who asked about the possibility of an advance on his salary from an owner.



Baseball in the 1890s and its enduring appeal: go back to capital-labor



The NL in the 1890s: The Classic Problem:

The AA champion New York Gothams of 1884 - the NL Giants finished 22 games out of first. Close pennant races and good teams in the biggest cities were crucial to the sport's profitability



The NL champion New York Giants of 1888 - that year the NL got it right. But in the 1890s, Baltimore, Boston, and Brooklyn won all the NL pennants while New York, Chicago, and Philadelphia had relatively weak teams. And you can look it up.



Syndicate Ball and the Origins of the American

League: Andrew Freedman of the Giants suggested “syndicate ball” as a solution to the “classic problem.” But fan opposition and the Steinbrennerian egos of such magnates as Chris Van der Ahe of the Browns (second from left in top row) ruled that out. This opened the door for the American League.



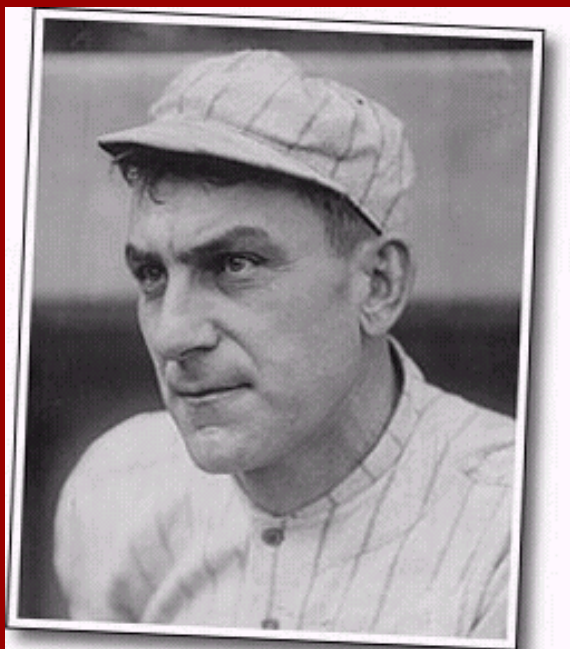
The magnates of a combined, 12 team NL in 1897.

Ban Johnson and
the Great Baseball
War 1900-1903;

Johnson turned the
Western League into
American League
(1900); challenged the
NL on Victorian
ground; in 1900 NL,
reducing its size as
response to syndicate
scandal, left and AL
entered Cleveland,
Baltimore, Washington
(all victims of
syndicate ball)



Good economic times and Cleveland booster Charles Somers kept the AL afloat; tired of giving up best players for \$500 draft fee, the AL opted out of the NA in 1901; war with NL and Johnson's escrow accounts of all teams; the Players' Protective Association and the opening for roster raiding; the Lajoie case (from Phillies to Athletics to Spiders - with stops in Atlantic City)



The AL into New York in 1903 (Devery and Farrell vs. Freedman - a Tammany battle) and the NL sues for peace



Fifty years of the classic AL-NL followed: ten cities, 16 teams, none west of St. Louis, none south of Washington; held together by the sinews of industrial America, namely the telegraph and the railroad.