

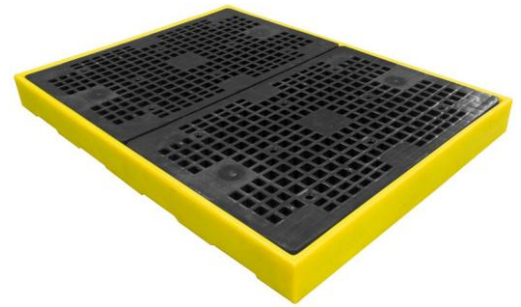
## Technical Data Sheet | BF4

### Sump Floor | 4 x Drums or Small Containers

A low-profile 4-drum sump floor is only 150mm high moulded from medium-density polyethylene that can be used as a stand-alone unit or combined with others to create unlimited bundled areas. Units can be joined together with plastic connectors to inter-link the sumps and the injection moulded mesh floor.

#### Product Specifications

External Dimensions (WxLxH)	1260 x 1675 x 150mm
Unit Weight	Approx. 38kg
Sump Capacity	300ltr
UDL	2000kg
UK Pack Size	13
Export Pack Size	14



#### Product Features and Benefits

- Can be combined to create larger work areas
- Low-profile for easy loading and unloading
- Broad range chemical compatibility
- 2 x removable grid for easy cleaning
- UV stabilised
- Backed by our 3 year guarantee
- DIBt approved