

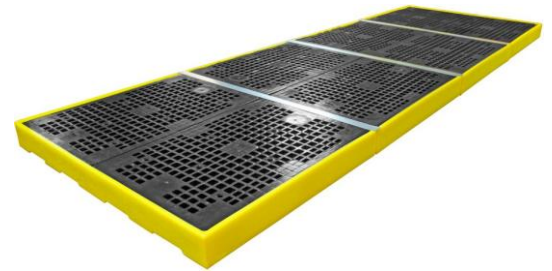
## Technical Data Sheet | BF4KIT2

### Sump Floor Kit | 16 x Drums / 4 x IBCs or Sump Work Area

This kit provides a 5040mm x 1660mm fully contained 4-in-a-line low-profile storage/bunded work area and comes complete with sump connectors (holes are pre-drilled) and joining strips. Once assembled you have a storage/bunded work area that can accommodate up to 4 x 1000ltr standard IBCs or 16 x drums making this a very practical and cost effective storage/bunded work space solution.

#### Product Specifications

Section Dimensions (WxLxH)	1260 x 1660 x 150mm
Assembled Dimensions (WxLxH)	1660 x 5040 x 150mm
Unit Weight	Approx. 38kg per section
Sump Capacity	300ltr per section, 1200ltr per kit
UDL	2000kg per section
Contents	4 x BF4 Sump Floors, 4 x BFS4 Joining Strips & 3 x BFC Sump Connectors



#### Product Features and Benefits

- Can be combined to create larger work areas
- Low-profile for easy loading and unloading
- Broad range chemical compatibility
- 4 x removable grid for easy cleaning
- Consists of 1 x BF2 Sump Floor, 1 x BF4 Sump Floor, 1 x BFS2 Joining Strip & 1 x Sump Connector
- UV stabilised
- Backed by our 3 year guarantee
- DIBt approved